

Product datasheet for **TA324557**

Nucleolin (NCL) Rabbit Polyclonal Antibody

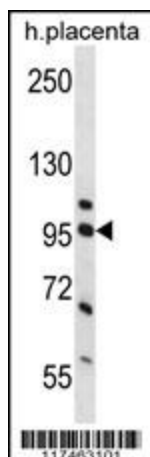
Product data:

Product Type:	Primary Antibodies
Applications:	IF, WB
Recommended Dilution:	WB: 1:1000, IF: 1:10~50
Reactivity:	Human (Predicted: Monkey)
Host:	Rabbit
Isotype:	IgG
Clonality:	Polyclonal
Immunogen:	This NCL antibody is generated from rabbits immunized with a KLH conjugated synthetic peptide between 276-304 amino acids from the Central region of human NCL.
Formulation:	Purified polyclonal antibody supplied in PBS with 0.09% (W/V) sodium azide.
Concentration:	lot specific
Purification:	This antibody is purified through a protein A column, followed by peptide affinity purification.
Conjugation:	Unconjugated
Storage:	Store at -20°C as received.
Stability:	Stable for 12 months from date of receipt.
Predicted Protein Size:	76614 Da
Gene Name:	nucleolin
Database Link:	NP_005372 Entrez Gene 720965 Monkey Entrez Gene 4691 Human P19338
Synonyms:	C23
Protein Families:	Druggable Genome, Stem cell - Pluripotency
Protein Pathways:	Pathogenic Escherichia coli infection

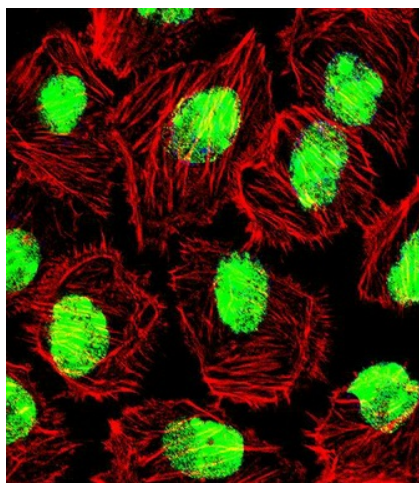


[View online »](#)

Product images:



NCL Antibody (Center P291) (Cat. #TA324557) western blot analysis in human placenta tissue lysates (35ug/lane). This demonstrates the NCL antibody detected the NCL protein (arrow).



IF image of U251 cell stained with NCL Antibody (Center P291) (Cat#TA324557). U251 cells were incubated with NCL primary antibody (1:25, 1 h at 37°C). For secondary antibody, Alexa Fluor® 488 conjugated donkey anti-rabbit antibody (green) was used (1:400). Cytoplasmic actin was counterstained with Alexa Fluor® 555 (red) conjugated Phalloidin (7 units/ml). Nuclei were counterstained with DAPI (blue). NCL immunoreactivity is localized to Nucleus significantly.