

## Product datasheet for **TA324555S**

### **EWSR1 Rabbit Polyclonal Antibody**

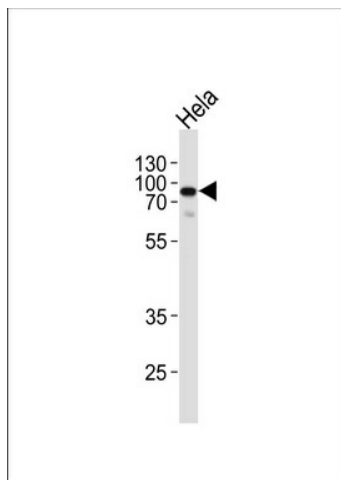
#### **Product data:**

Product Type:	Primary Antibodies
Applications:	IF, WB
Recommended Dilution:	WB: 1:1000, IF: 1:10~50
Reactivity:	Human (Predicted: Mouse)
Host:	Rabbit
Isotype:	IgG
Clonality:	Polyclonal
Immunogen:	This EWSR1 antibody is generated from rabbits immunized with a KLH conjugated synthetic peptide between 623-652 amino acids from the C-terminal region of human EWSR1.
Formulation:	Purified polyclonal antibody supplied in PBS with 0.09% (W/V) sodium azide.
Concentration:	lot specific
Purification:	This antibody is purified through a protein A column, followed by peptide affinity purification.
Conjugation:	Unconjugated
Storage:	Store at -20°C as received.
Stability:	Stable for 12 months from date of receipt.
Predicted Protein Size:	68478 Da
Gene Name:	EWS RNA binding protein 1
Database Link:	<a href="#">NP_053733</a> <a href="#">Entrez Gene 14030 Mouse</a> <a href="#">Entrez Gene 2130 Human</a> <a href="#">Q01844</a>
Synonyms:	bK984G1.4; EWS; EWS-FLI1
Protein Families:	Druggable Genome, Stem cell - Pluripotency, Transcription Factors

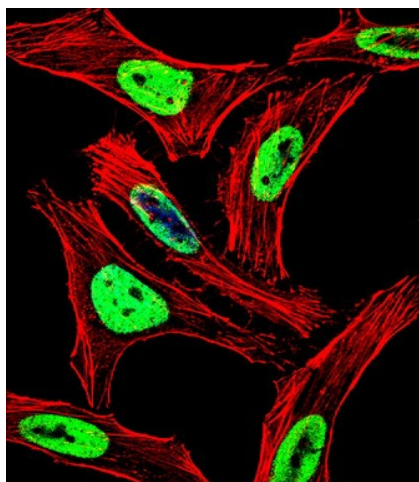


[View online »](#)

## Product images:



EWSR1 Antibody (C-term) (Cat. #[TA324555]) western blot analysis in HeLa cell line lysates (35ug/lane). This demonstrates the EWSR1 antibody detected the EWSR1 protein (arrow).



IF image of HeLa cell stained with EWSR1 Antibody (C-term) (Cat#[TA324555]). HeLa cells were incubated with EWSR1 primary antibody (1:25, 1 h at 37°C). For secondary antibody, Alexa Fluor® 488 conjugated donkey anti-rabbit antibody (green) was used (1:400). Cytoplasmic actin was counterstained with Alexa Fluor® 555 (red) conjugated Phalloidin (7 units/ml). Nuclei were counterstained with DAPI (blue). EWSR1 immunoreactivity is localized to Nucleus significantly.