

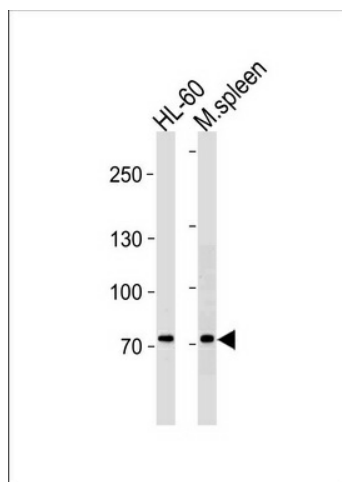
Product datasheet for TA324553S

PRDM1 Rabbit Polyclonal Antibody

Product data:

Product Type:	Primary Antibodies
Applications:	WB
Recommended Dilution:	WB: 1:1000
Reactivity:	Human, Mouse
Host:	Rabbit
Isotype:	IgG
Clonality:	Polyclonal
Immunogen:	This PRDM1 antibody is generated from rabbits immunized with a KLH conjugated synthetic peptide between 106-134 amino acids from the N-terminal region of human PRDM1.
Formulation:	Purified polyclonal antibody supplied in PBS with 0.09% (W/V) sodium azide.
Concentration:	lot specific
Purification:	This antibody is purified through a protein A column, followed by peptide affinity purification.
Conjugation:	Unconjugated
Storage:	Store at -20°C as received.
Stability:	Stable for 12 months from date of receipt.
Predicted Protein Size:	91771 Da
Gene Name:	PR domain 1
Database Link:	NP_001189 Entrez Gene 12142 Mouse Entrez Gene 639 Human O75626
Synonyms:	BLIMP1; PRDI-BF1
Protein Families:	Transcription Factors


[View online »](#)

Product images:

PRDM1 Antibody (N-term) (Cat. #[TA324553])
western blot analysis in HL-60 cell line and mouse
spleen tissue lysates (35ug/lane). This
demonstrates the PRDM1 antibody detected the
PRDM1 protein (arrow).