

## Product datasheet for **TA324551S**

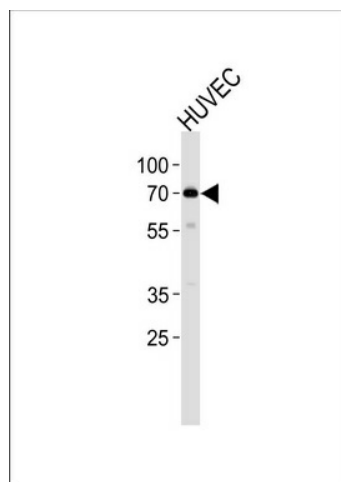
### ORC2 Rabbit Polyclonal Antibody

#### Product data:

Product Type:	Primary Antibodies
Applications:	WB
Recommended Dilution:	WB: 1:1000
Reactivity:	Human
Host:	Rabbit
Isotype:	IgG
Clonality:	Polyclonal
Immunogen:	This ORC2L antibody is generated from rabbits immunized with a KLH conjugated synthetic peptide between 208-237 amino acids from the Central region of human ORC2L.
Formulation:	Purified polyclonal antibody supplied in PBS with 0.09% (W/V) sodium azide.
Concentration:	lot specific
Purification:	This antibody is purified through a protein A column, followed by peptide affinity purification.
Conjugation:	Unconjugated
Storage:	Store at -20°C as received.
Stability:	Stable for 12 months from date of receipt.
Predicted Protein Size:	65972 Da
Gene Name:	origin recognition complex subunit 2
Database Link:	<a href="#">NP_006181</a> <a href="#">Entrez Gene 4999 Human</a> <a href="#">Q13416</a>
Synonyms:	ORC2L
Protein Families:	Stem cell - Pluripotency, Transcription Factors
Protein Pathways:	Cell cycle



[View online »](#)

**Product images:**

ORC2L Antibody (Center) (Cat. #TA324551)  
western blot analysis in HUVEC cell line lysates  
(35ug/lane). This demonstrates the ORC2L  
antibody detected the ORC2L protein (arrow).