

## Product datasheet for **TA324549**

### TBX21 Rabbit Polyclonal Antibody

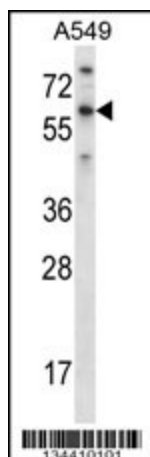
#### Product data:

Product Type:	Primary Antibodies
Applications:	IF, WB
Recommended Dilution:	IF: 1:10~50, WB: 1:1000
Reactivity:	Human
Host:	Rabbit
Isotype:	IgG
Clonality:	Polyclonal
Immunogen:	This TBX21 antibody is generated from rabbits immunized with a KLH conjugated synthetic peptide between 22-50 amino acids from the N-terminal region of human TBX21.
Formulation:	Purified polyclonal antibody supplied in PBS with 0.09% (W/V) sodium azide.
Concentration:	lot specific
Purification:	This antibody is purified through a protein A column, followed by peptide affinity purification.
Conjugation:	Unconjugated
Storage:	Store at -20°C as received.
Stability:	Stable for 12 months from date of receipt.
Predicted Protein Size:	58328 Da
Gene Name:	T-box 21
Database Link:	<a href="#">NP_037483</a> <a href="#">Entrez Gene 30009 Human</a> <a href="#">Q9UL17</a>
Synonyms:	T-bet; T-PET; TBET; TBLYM
Protein Families:	Druggable Genome, Transcription Factors

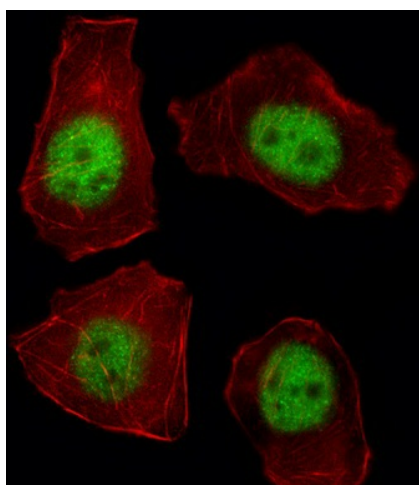


[View online »](#)

## Product images:



TBX21 Antibody (N-term) (Cat. #TA324549) western blot analysis in A549 cell line lysates (35ug/lane). This demonstrates the TBX21 antibody detected the TBX21 protein (arrow).



IF image of A549 cell stained with TBX21 Antibody (N-term) (Cat#TA324549). A549 cells were incubated with TBX21 primary antibody (1:25, 1 h at 37°C). For secondary antibody, Alexa Fluor® 488 conjugated donkey anti-rabbit antibody (green) was used (1:400). Cytoplasmic actin was counterstained with Alexa Fluor® 555 (red) conjugated Phalloidin (7 units/ml). TBX21 immunoreactivity is localized to Nucleus significantly.