

Product datasheet for **TA324544S**

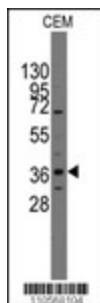
PITX2 Rabbit Polyclonal Antibody

Product data:

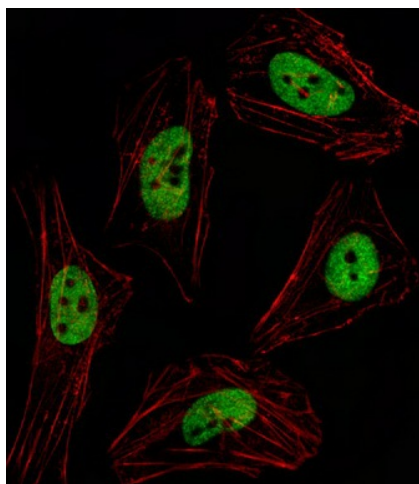
Product Type:	Primary Antibodies
Applications:	IF, WB
Recommended Dilution:	IF: 1:10~50, WB: 1:1000
Reactivity:	Human (Predicted: Mouse, Rat, Zebrafish, Chicken, Xenopus)
Host:	Rabbit
Isotype:	IgG
Clonality:	Polyclonal
Immunogen:	This PITX2 antibody is generated from rabbits immunized with a KLH conjugated synthetic peptide between 122-151 amino acids from the C-terminal region of human PITX2.
Formulation:	Purified polyclonal antibody supplied in PBS with 0.09% (W/V) sodium azide.
Concentration:	lot specific
Purification:	This antibody is purified through a protein A column, followed by peptide affinity purification.
Conjugation:	Unconjugated
Storage:	Store at -20°C as received.
Stability:	Stable for 12 months from date of receipt.
Predicted Protein Size:	35370 Da
Gene Name:	paired like homeodomain 2
Database Link:	NP_000316 Entrez Gene 18741 Mouse Entrez Gene 54284 Rat Entrez Gene 5308 Human Q99697
Synonyms:	ARP1; Brx1; IDG2; IGDS; IGDS2; IHG2; IRID2; Otlx2; PTX2; RGS; RIEG; RIEG1; RS
Protein Families:	Transcription Factors
Protein Pathways:	TGF-beta signaling pathway

[View online »](#)

Product images:



Western blot analysis of anti-Pitx2 Pab (Cat.# [TA324544]) in CEM cell line lysates (35ug/lane). Pitx2 (arrow) was detected using the purified Pab.



IF image of HeLa cell stained with PITX2 Antibody (C-term) (Cat#[TA324544]/SA070209B). HeLa cells were incubated with PITX2 primary antibody (1:25, 1 h at 37°C). For secondary antibody, Alexa Fluor® 488 conjugated donkey anti-rabbit antibody (green) was used (1:400). Cytoplasmic actin was counterstained with Alexa Fluor® 555 (red) conjugated Phalloidin (7 units/ml). PITX2 immunoreactivity is localized to Nucleus significantly.