

Product datasheet for **TA324543**

PRAS40 (AKT1S1) Rabbit Polyclonal Antibody

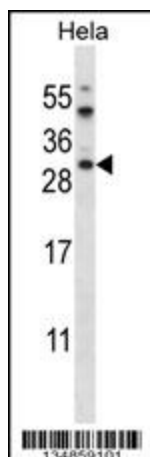
Product data:

Product Type:	Primary Antibodies
Applications:	IHC, WB
Recommended Dilution:	WB: 1:1000, IHC: 1:10~50
Reactivity:	Human (Predicted: Mouse)
Host:	Rabbit
Isotype:	IgG
Clonality:	Polyclonal
Immunogen:	This AKT1S1 antibody is generated from rabbits immunized with a KLH conjugated synthetic peptide between 227-256 amino acids from the C-terminal region of human AKT1S1.
Formulation:	Purified polyclonal antibody supplied in PBS with 0.09% (W/V) sodium azide.
Concentration:	lot specific
Purification:	This antibody is purified through a protein A column, followed by peptide affinity purification.
Conjugation:	Unconjugated
Storage:	Store at -20°C as received.
Stability:	Stable for 12 months from date of receipt.
Predicted Protein Size:	27383 Da
Gene Name:	AKT1 substrate 1
Database Link:	NP_001092102 Entrez Gene 67605 Mouse Entrez Gene 84335 Human Q96B36
Synonyms:	Lobe; PRAS40

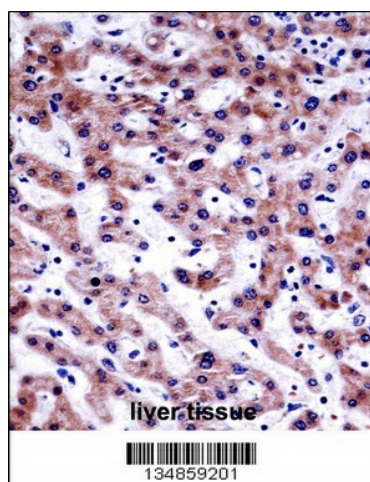


[View online »](#)

Product images:



AKT1S1 Antibody (C-term) (Cat. #TA324543) western blot analysis in HeLa cell line lysates (35ug/lane). This demonstrates the AKT1S1 antibody detected the AKT1S1 protein (arrow).



AKT1S1 Antibody (C-term) (TA324543) immunohistochemistry analysis in formalin fixed and paraffin embedded human liver tissue followed by peroxidase conjugation of the secondary antibody and DAB staining. This data demonstrates the use of AKT1S1 Antibody (C-term) for immunohistochemistry. Clinical relevance has not been evaluated.