

## Product datasheet for **TA324542**

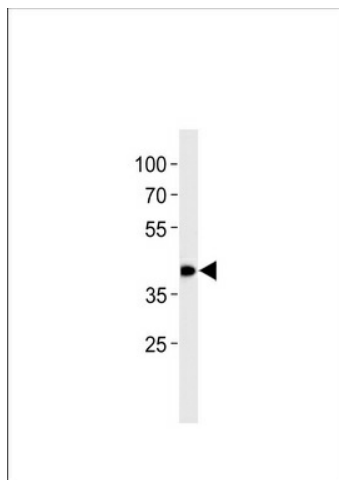
### SLC2A4RG Rabbit Polyclonal Antibody

#### Product data:

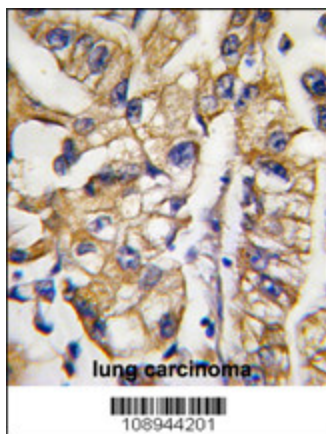
Product Type:	Primary Antibodies
Applications:	IHC, WB
Recommended Dilution:	WB: 1:1000, IHC: 1:10~50
Reactivity:	Human
Host:	Rabbit
Isotype:	IgG
Clonality:	Polyclonal
Immunogen:	This HDBP1 antibody is generated from rabbits immunized with a KLH conjugated synthetic peptide between 213-242 amino acids from the Central region of human HDBP1.
Formulation:	Purified polyclonal antibody supplied in PBS with 0.09% (W/V) sodium azide.
Concentration:	lot specific
Purification:	This antibody is purified through a protein G column, followed by dialysis against PBS.
Conjugation:	Unconjugated
Storage:	Store at -20°C as received.
Stability:	Stable for 12 months from date of receipt.
Predicted Protein Size:	41267 Da
Gene Name:	SLC2A4 regulator
Database Link:	<a href="#">NP_064446</a> <a href="#">Entrez Gene 56731 Human</a> <a href="#">Q9NR83</a>
Synonyms:	GEF; HDBP-1; HDBP1; Si-1-2; Si-1-2-19
Protein Families:	Transcription Factors



[View online »](#)

**Product images:**

HDBP1 Antibody (Center) (Cat. #TA324542) western blot analysis in SW620 cell line lysates (35ug/lane). This demonstrates the HDBP1 antibody detected the HDBP1 protein (arrow).



Formalin-fixed and paraffin-embedded human lung carcinoma tissue reacted with HDBP1 Antibody (Center) (Cat.#TA324542), which was peroxidase-conjugated to the secondary antibody, followed by DAB staining. This data demonstrates the use of this antibody for immunohistochemistry; clinical relevance has not been evaluated.