

Product datasheet for **TA324541**

COUP TF1 (NR2F1) Rabbit Polyclonal Antibody

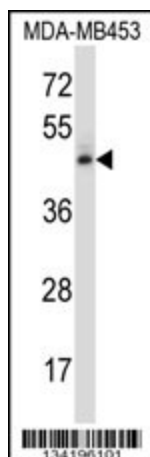
Product data:

Product Type:	Primary Antibodies
Applications:	WB
Recommended Dilution:	WB: 1:1000
Reactivity:	Human (Predicted: Bovine)
Host:	Rabbit
Isotype:	IgG
Clonality:	Polyclonal
Immunogen:	This NR2F1 antibody is generated from rabbits immunized with a KLH conjugated synthetic peptide between 48-76 amino acids from the N-terminal region of human NR2F1.
Formulation:	Purified polyclonal antibody supplied in PBS with 0.09% (W/V) sodium azide.
Concentration:	lot specific
Purification:	This antibody is purified through a protein A column, followed by peptide affinity purification.
Conjugation:	Unconjugated
Storage:	Store at -20°C as received.
Stability:	Stable for 12 months from date of receipt.
Predicted Protein Size:	46156 Da
Gene Name:	nuclear receptor subfamily 2 group F member 1
Database Link:	NP_005645 Entrez Gene 7025 Human P10589
Synonyms:	BBOAS; BBSOAS; COUP-TFI; EAR-3; EAR3; ERBAL3; NR2F2; SVP44; TCFCOUP1; TFCOUP1
Protein Families:	Druggable Genome, Nuclear Hormone Receptor, Transcription Factors



[View online »](#)

Product images:



NR2F1 Antibody (N-term) (Cat. #TA324541) western blot analysis in MDA-MB453 cell line lysates (35ug/lane). This demonstrates the NR2F1 antibody detected the NR2F1 protein (arrow).