

Product datasheet for **TA324540S**

NR2F2 Rabbit Polyclonal Antibody

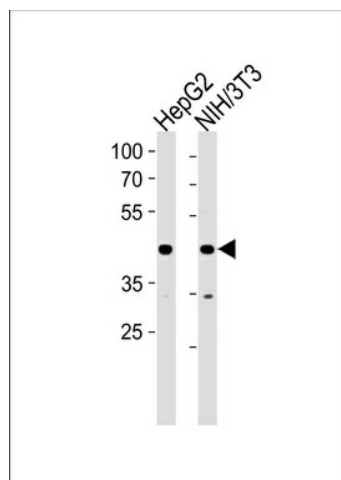
Product data:

Product Type:	Primary Antibodies
Applications:	WB
Recommended Dilution:	WB: 1:1000
Reactivity:	Human, Mouse (Predicted: Rat, Bovine)
Host:	Rabbit
Isotype:	IgG
Clonality:	Polyclonal
Immunogen:	This NR2F2 antibody is generated from rabbits immunized with a KLH conjugated synthetic peptide between 1-30 amino acids from the N-terminal region of human NR2F2.
Formulation:	Purified polyclonal antibody supplied in PBS with 0.09% (W/V) sodium azide.
Concentration:	lot specific
Purification:	This antibody is purified through a protein A column, followed by peptide affinity purification.
Conjugation:	Unconjugated
Storage:	Store at -20°C as received.
Stability:	Stable for 12 months from date of receipt.
Predicted Protein Size:	45571 Da
Gene Name:	nuclear receptor subfamily 2 group F member 2
Database Link:	NP_001138627 Entrez Gene 11819 MouseEntrez Gene 113984 RatEntrez Gene 7026 Human P24468
Synonyms:	ARP1; CHTD4; COUPTFB; COUPTFII; NF-E3; NR2F1; SVP40; TFCOUP2
Protein Families:	Druggable Genome, Nuclear Hormone Receptor, Transcription Factors



[View online »](#)

Product images:



NR2F2 Antibody (N-term) (Cat. #[TA324540])
western blot analysis in HepG2, mouse NIH/3T3
cell line lysates (35ug/lane). This demonstrates the
NR2F2 antibody detected the NR2F2 protein
(arrow).