

Product datasheet for **TA324538**

Nuclear Factor 1 (NFIA) Rabbit Polyclonal Antibody

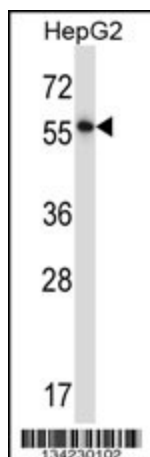
Product data:

Product Type:	Primary Antibodies
Applications:	IF, WB
Recommended Dilution:	WB: 1:1000, IF: 1:10~50
Reactivity:	Human (Predicted: Mouse, Rat, Chicken)
Host:	Rabbit
Isotype:	IgG
Clonality:	Polyclonal
Immunogen:	This NFIA antibody is generated from rabbits immunized with a KLH conjugated synthetic peptide between 470-498 amino acids from the C-terminal region of human NFIA.
Formulation:	Purified polyclonal antibody supplied in PBS with 0.09% (W/V) sodium azide.
Concentration:	lot specific
Purification:	This antibody is purified through a protein A column, followed by peptide affinity purification.
Conjugation:	Unconjugated
Storage:	Store at -20°C as received.
Stability:	Stable for 12 months from date of receipt.
Predicted Protein Size:	55944 Da
Gene Name:	nuclear factor I A
Database Link:	NP_001128145 Entrez Gene 18027 Mouse Entrez Gene 25492 Rat Entrez Gene 4774 Human Q12857
Synonyms:	A; CTF; NF-I; NF1-A; NFI-A; NFI-L
Protein Families:	Transcription Factors

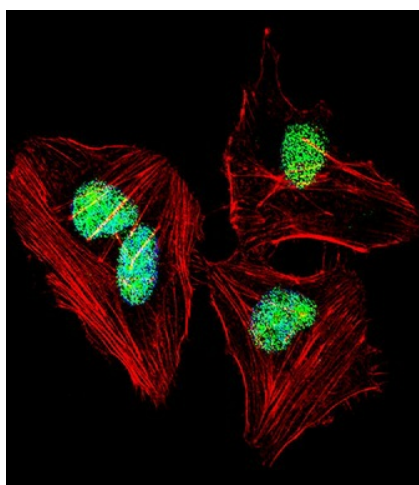


[View online »](#)

Product images:



NFIA Antibody (C-term) (Cat. #TA324538) western blot analysis in HepG2 cell line lysates (35ug/lane). This demonstrates the NFIA antibody detected the NFIA protein (arrow).



IF image of HeLa cell stained with NFIA Antibody (C-term) (Cat#TA324538). HeLa cells were incubated with NFIA primary antibody (1:25, 1 h at 37°C). For secondary antibody, Alexa Fluor® 488 conjugated donkey anti-rabbit antibody (green) was used (1:400). Cytoplasmic actin was counterstained with Alexa Fluor® 555 (red) conjugated Phalloidin (7 units/ml). Nuclei were counterstained with DAPI (blue). NFIA immunoreactivity is localized to Nucleus significantly.