

Product datasheet for **TA324535S**

Telomerase reverse transcriptase (TERT) Rabbit Polyclonal Antibody

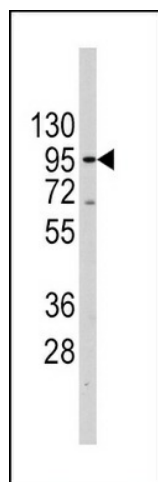
Product data:

Product Type:	Primary Antibodies
Applications:	FC, IF, WB
Recommended Dilution:	WB: 1:1000, FC: 1:10~50, IF: 1:10~50
Reactivity:	Human
Host:	Rabbit
Isotype:	IgG
Clonality:	Polyclonal
Immunogen:	This TERT antibody is generated from rabbits immunized with a KLH conjugated synthetic peptide between 627-656 amino acids from the Central region of human TERT.
Formulation:	Purified polyclonal antibody supplied in PBS with 0.09% (W/V) sodium azide.
Concentration:	lot specific
Purification:	This antibody is prepared by Saturated Ammonium Sulfate (SAS) precipitation followed by dialysis against PBS.
Conjugation:	Unconjugated
Storage:	Store at -20°C as received.
Stability:	Stable for 12 months from date of receipt.
Predicted Protein Size:	126997 Da
Gene Name:	telomerase reverse transcriptase
Database Link:	NP_937986 Entrez Gene 7015 Human O14746
Synonyms:	EST2; hEST2; TCS1; telomerase catalytic subunit; telomerase reverse transcriptase; TP2; TRT
Protein Families:	Druggable Genome

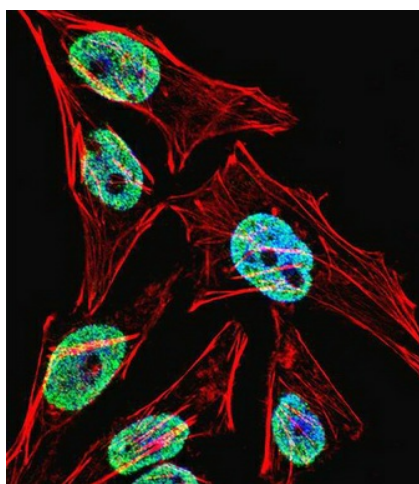


[View online »](#)

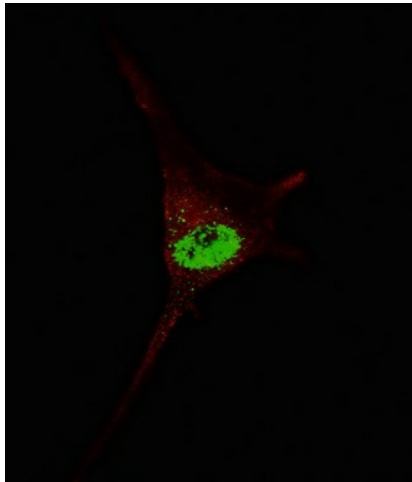
Product images:



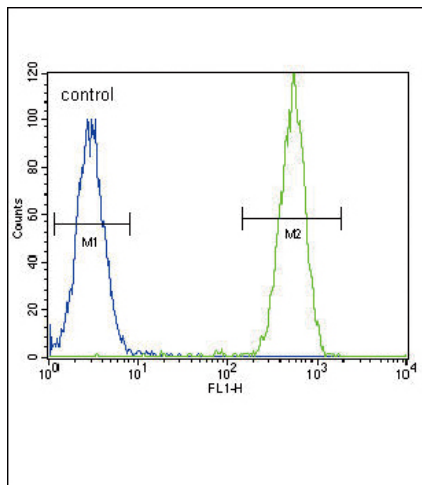
Western blot analysis of anti-TERT Antibody (Center) (RB14069) in Jurkat cell line lysates (35ug/lane). TERT (arrow) was detected using the purified Pab.



IF image of HeLa cell stained with TERT Antibody (Center) (Cat#[TA324535]). HeLa cells were incubated with TERT primary antibody (1:25, 1 h at 37°C). For secondary antibody, Alexa Fluor® 488 conjugated donkey anti-rabbit antibody (green) was used (1:400). Cytoplasmic actin was counterstained with Alexa Fluor® 555 (red) conjugated Phalloidin (7 units/ml). Nuclei were counterstained with DAPI (blue). TERT immunoreactivity is localized to Nucleus significantly and Cytoplasm weakly.



IF image of SY5Y cells stained with TERT (Center) antibody. SY5Y cells were incubated with [TA324535] TERT (Center) primary antibody (1:200, 2 h at RT). For secondary antibody, Alexa Fluor® 488 conjugated donkey anti-rabbit antibody (green) was used (1:1000, 1h). Nuclei were counterstained with Hoechst 33342 (blue). TERT immunoreactivity is localized to the nucleus of SY5Y cells.



TERT Antibody (Center) (Cat. #[TA324535]) flow cytometric analysis of HeLa cells (right histogram) compared to a negative control cell (left histogram). FITC-conjugated goat-anti-rabbit secondary antibodies were used for the analysis.