

## Product datasheet for **TA324534**

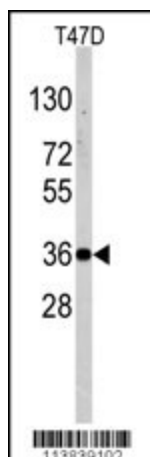
### **NANOS1 Rabbit Polyclonal Antibody**

#### **Product data:**

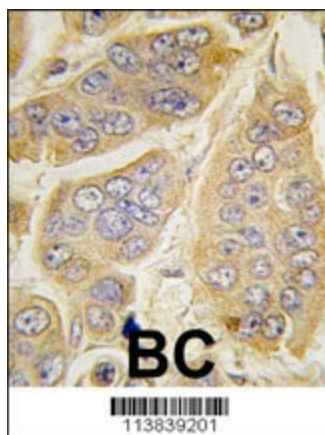
<b>Product Type:</b>	Primary Antibodies
<b>Applications:</b>	FC, IF, IHC, WB
<b>Recommended Dilution:</b>	WB: 1:1000, IHC: 1:10~50, IF: 1:10~50, FC: 1:10~50
<b>Reactivity:</b>	Human
<b>Host:</b>	Rabbit
<b>Isotype:</b>	IgG
<b>Clonality:</b>	Polyclonal
<b>Immunogen:</b>	This Nanos Homologue 1 (NANOS1) antibody is generated from rabbits immunized with a KLH conjugated synthetic peptide between 263-292 amino acids from the C-terminal region of human Nanos Homologue 1 (NANOS1).
<b>Formulation:</b>	Purified polyclonal antibody supplied in PBS with 0.09% (W/V) sodium azide.
<b>Concentration:</b>	lot specific
<b>Purification:</b>	This antibody is prepared by Saturated Ammonium Sulfate (SAS) precipitation followed by dialysis against PBS.
<b>Conjugation:</b>	Unconjugated
<b>Storage:</b>	Store at -20°C as received.
<b>Stability:</b>	Stable for 12 months from date of receipt.
<b>Predicted Protein Size:</b>	30230 Da
<b>Gene Name:</b>	nanos homolog 1 (Drosophila)
<b>Database Link:</b>	<a href="#">NP_955631</a> <a href="#">Entrez Gene 340719 Human</a> <a href="#">Q8WY41</a>
<b>Synonyms:</b>	EC_Rep1a; NOS-1; NOS1; SPGF12; ZC2HC12A



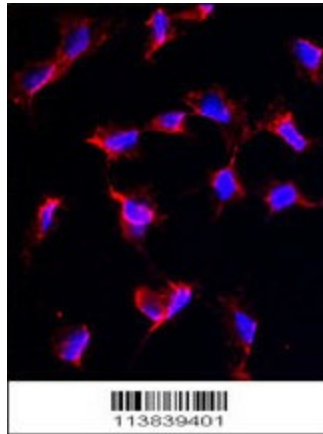
[View online »](#)

**Product images:**

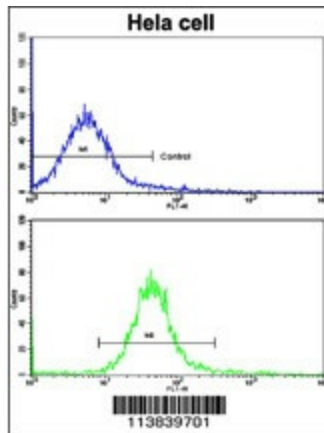
Western blot analysis of anti-NANOS1 Antibody (C-term) (RB13839) in T47D cell line lysates (35ug/lane). NANOS1 (arrow) was detected using the purified Pab.



Formalin-fixed and paraffin-embedded human breast carcinoma tissue reacted with NANOS1 antibody (C-term) (Cat.#TA324534), which was peroxidase-conjugated to the secondary antibody, followed by DAB staining. This data demonstrates the use of this antibody for immunohistochemistry; clinical relevance has not been evaluated.



Immunofluorescence analysis of anti-NANOS1 Antibody (C-term) in HeLa cells. 0.025 mg/ml primary antibody was followed by Alexa-Fluor-546-conjugated donkey anti-rabbit IgG (H+L). Alexa-Fluor-546 emits orange fluorescence. Blue counterstaining is DAPI.



Flow cytometric analysis of HeLa cells using Nanos Homologue 1 (NANOS1) Antibody (C-term) (bottom histogram) compared to a negative control cell (top histogram). FITC-conjugated goat-anti-rabbit secondary antibodies were used for the analysis.