

Product datasheet for **TA324532S**

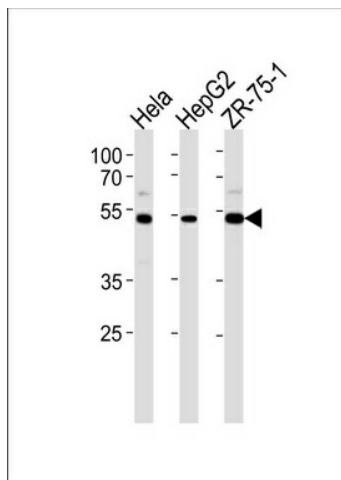
RAP1 (TERF2IP) Rabbit Polyclonal Antibody

Product data:

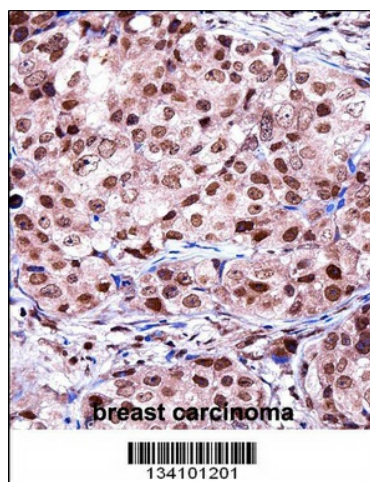
Product Type:	Primary Antibodies
Applications:	IHC, WB
Recommended Dilution:	WB: 1:1000, IHC: 1:10~50
Reactivity:	Human (Predicted: Monkey)
Host:	Rabbit
Isotype:	IgG
Clonality:	Polyclonal
Immunogen:	This TERF2IP antibody is generated from rabbits immunized with a KLH conjugated synthetic peptide between 349-378 amino acids from the C-terminal region of human TERF2IP.
Formulation:	Purified polyclonal antibody supplied in PBS with 0.09% (W/V) sodium azide.
Concentration:	lot specific
Purification:	This antibody is purified through a protein A column, followed by peptide affinity purification.
Conjugation:	Unconjugated
Storage:	Store at -20°C as received.
Stability:	Stable for 12 months from date of receipt.
Predicted Protein Size:	44260 Da
Gene Name:	TERF2 interacting protein
Database Link:	NP_061848 Entrez Gene 712149 Monkey Entrez Gene 54386 Human Q9NYB0
Synonyms:	DRIP5; RAP1
Protein Families:	Transcription Factors



[View online »](#)

Product images:


TERF2IP Antibody (C-term) (Cat. #TA324532]) western blot analysis in HeLa, HepG2, ZR-75-1 cell line lysates (35ug/lane). This demonstrates the TERF2IP antibody detected the TE2IP protein (arrow).



TERF2IP Antibody (C-term) ([TA324532]) immunohistochemistry analysis in formalin fixed and paraffin embedded human breast carcinoma followed by peroxidase conjugation of the secondary antibody and DAB staining. This data demonstrates the use of TERF2IP Antibody (C-term) for immunohistochemistry. Clinical relevance has not been evaluated.