

## Product datasheet for TA324530S

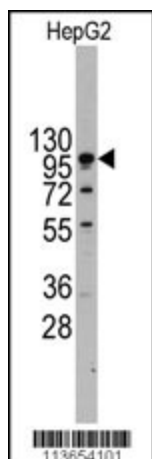
### R Cadherin (CDH4) Rabbit Polyclonal Antibody

#### Product data:

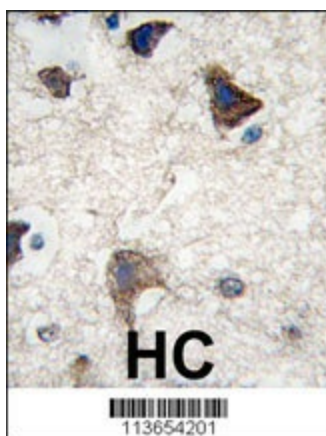
Product Type:	Primary Antibodies
Applications:	FC, IF, IHC, WB
Recommended Dilution:	WB: 1:1000, IHC: 1:10~50, IF: 1:10~50, FC: 1:10~50
Reactivity:	Human (Predicted: Mouse, Rat)
Host:	Rabbit
Isotype:	IgG
Clonality:	Polyclonal
Immunogen:	This CDH4 antibody is generated from rabbits immunized with a KLH conjugated synthetic peptide between 175-203 amino acids from the N-terminal region of human CDH4.
Formulation:	Purified polyclonal antibody supplied in PBS with 0.09% (W/V) sodium azide.
Concentration:	lot specific
Purification:	This antibody is purified through a protein A column, followed by peptide affinity purification.
Conjugation:	Unconjugated
Storage:	Store at -20°C as received.
Stability:	Stable for 12 months from date of receipt.
Predicted Protein Size:	100281 Da
Gene Name:	cadherin 4
Database Link:	<a href="#">NP_001785</a> <a href="#">Entrez Gene 12561 Mouse</a> <a href="#">Entrez Gene 114588 Rat</a> <a href="#">Entrez Gene 1002 Human</a> <a href="#">P55283</a>
Synonyms:	CAD4; R-CAD; RCAD
Protein Families:	Transmembrane
Protein Pathways:	Cell adhesion molecules (CAMs)


[View online »](#)

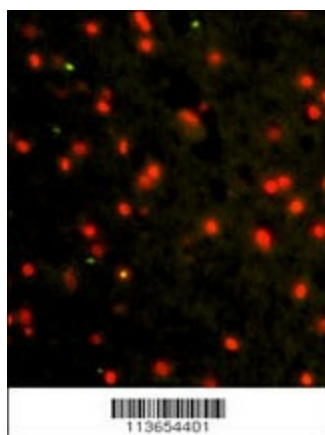
## Product images:



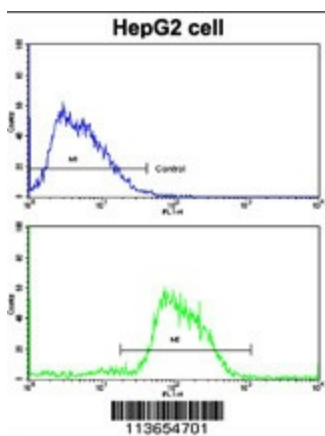
Western blot analysis of anti-CDH4 Antibody (N-term) (RB13654) in HepG2 cell line lysates (35ug/lane). CDH4 (arrow) was detected using the purified Pab.



Formalin-fixed and paraffin-embedded human brain tissue reacted with CDH4 antibody (N-term) (Cat.#[TA324530]), which was peroxidase-conjugated to the secondary antibody, followed by DAB staining. This data demonstrates the use of this antibody for immunohistochemistry; clinical relevance has not been evaluated.



Immunofluorescence analysis of CDH4 Antibody (N-term) Antibody with paraffin-embedded human brain tissue. 0.025 mg/ml primary antibody was followed by FITC-conjugated goat anti-rabbit IgG (whole molecule). FITC emits green fluorescence. Red counterstaining is PI.



Flow cytometric analysis of HepG2 cells using CDH4 Antibody (N-term) (bottom histogram) compared to a negative control cell (top histogram). FITC-conjugated goat-anti-rabbit secondary antibodies were used for the analysis.