

Product datasheet for **TA324529S**

Retinoic Acid Receptor alpha (RARA) Rabbit Polyclonal Antibody

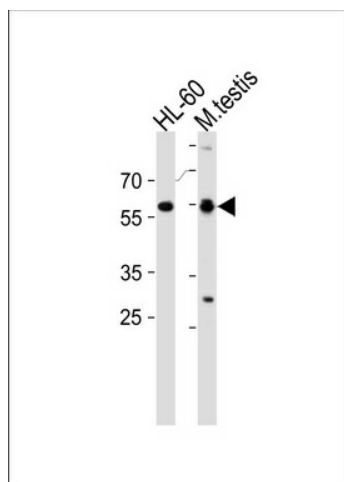
Product data:

Product Type:	Primary Antibodies
Applications:	FC, IF, IHC, WB
Recommended Dilution:	WB: 1:1000, IF: 1:10~50, IHC: 1:10~50, FC: 1:10~50
Reactivity:	Human, Mouse
Host:	Rabbit
Isotype:	IgG
Clonality:	Polyclonal
Immunogen:	This RARA antibody is generated from rabbits immunized with a KLH conjugated synthetic peptide between 322-349 amino acids from the C-terminal region of human RARA.
Formulation:	Purified polyclonal antibody supplied in PBS with 0.09% (W/V) sodium azide.
Concentration:	lot specific
Purification:	This antibody is purified through a protein A column, followed by peptide affinity purification.
Conjugation:	Unconjugated
Storage:	Store at -20°C as received.
Stability:	Stable for 12 months from date of receipt.
Predicted Protein Size:	50771 Da
Gene Name:	retinoic acid receptor alpha
Database Link:	NP_000955 Entrez Gene 19401 Mouse Entrez Gene 5914 Human P10276
Synonyms:	NR1B1; RAR
Protein Families:	Druggable Genome, Nuclear Hormone Receptor, Transcription Factors
Protein Pathways:	Acute myeloid leukemia, Pathways in cancer

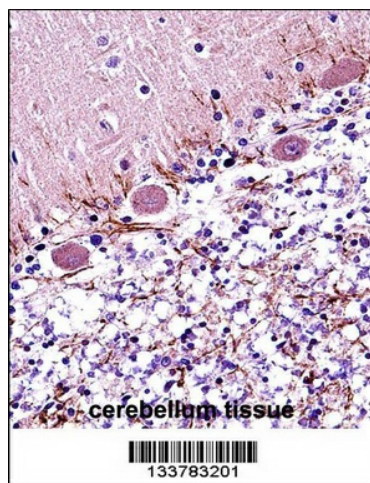


[View online »](#)

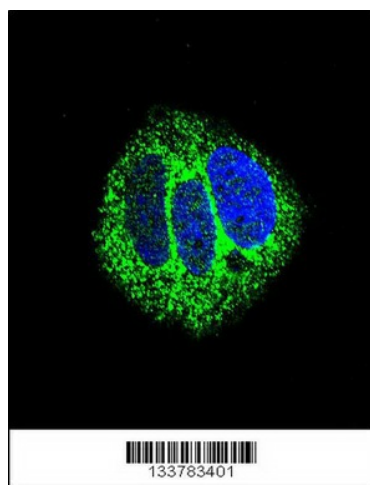
Product images:



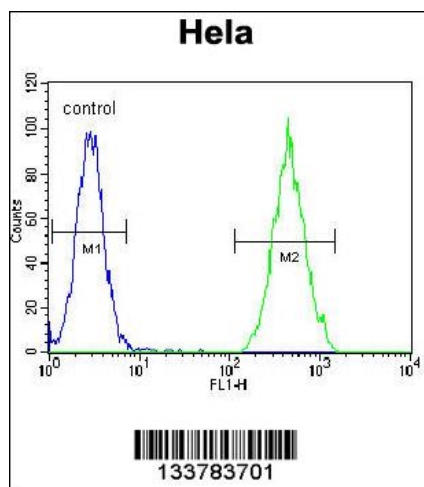
RARA Antibody (C-term) (Cat. # [TA324529]) western blot analysis in HL-60 cell line and mouse testis tissue lysates (35ug/lane). This demonstrates the RARA antibody detected the RARA protein (arrow).



RARA Antibody (C-term) (Cat. # [TA324529]) immunohistochemistry analysis in formalin fixed and paraffin embedded human cerebellum tissue followed by peroxidase conjugation of the secondary antibody and DAB staining. This data demonstrates the use of RARA Antibody (C-term) for immunohistochemistry. Clinical relevance has not been evaluated.



Confocal immunofluorescent analysis of RARA Antibody (C-term) (Cat#[TA324529]) with MCF-7 cell followed by Alexa Fluor® 488-conjugated goat anti-rabbit IgG (green). DAPI was used to stain the cell nuclear (blue).



RARA Antibody (C-term) (Cat. #TA324529) flow cytometric analysis of HeLa cells (right histogram) compared to a negative control cell (left histogram). FITC-conjugated goat-anti-rabbit secondary antibodies were used for the analysis.