

Product datasheet for **TA324528S**

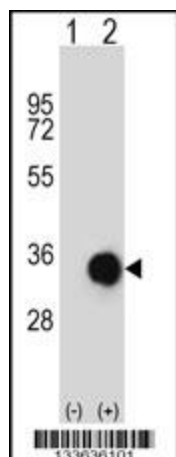
Caspase-6 (CASP6) Rabbit Polyclonal Antibody

Product data:

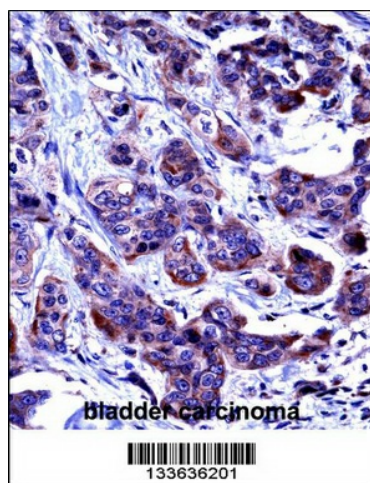
Product Type:	Primary Antibodies
Applications:	IHC, WB
Recommended Dilution:	WB: 1:1000, IHC: 1:10~50
Reactivity:	Human
Host:	Rabbit
Isotype:	IgG
Clonality:	Polyclonal
Immunogen:	This CASP6 antibody is generated from rabbits immunized with a KLH conjugated synthetic peptide between 17-45 amino acids from the N-terminal region of human CASP6.
Formulation:	Purified polyclonal antibody supplied in PBS with 0.09% (W/V) sodium azide.
Concentration:	lot specific
Purification:	This antibody is purified through a protein A column, followed by peptide affinity purification.
Conjugation:	Unconjugated
Storage:	Store at -20°C as received.
Stability:	Stable for 12 months from date of receipt.
Predicted Protein Size:	33310 Da
Gene Name:	caspase 6
Database Link:	NP_001217 Entrez Gene 839 Human P55212
Synonyms:	MCH2
Protein Families:	Druggable Genome, Protease, Stem cell - Pluripotency
Protein Pathways:	Apoptosis

[View online »](#)

Product images:



Western blot analysis of CASP6 (arrow) using rabbit polyclonal CASP6 Antibody (N-term) (Cat. # [TA324528]). 293 cell lysates (2 ug/lane) either nontransfected (Lane 1) or transiently transfected (Lane 2) with the CASP6 gene.



CASP6 Antibody (N-term) ([TA324528]) immunohistochemistry analysis in formalin fixed and paraffin embedded human bladder carcinoma followed by peroxidase conjugation of the secondary antibody and DAB staining. This data demonstrates the use of CASP6 Antibody (N-term) for immunohistochemistry. Clinical relevance has not been evaluated.