

## Product datasheet for **TA324527S**

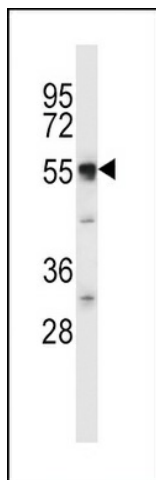
### DMT1 (SLC11A2) Rabbit Polyclonal Antibody

#### Product data:

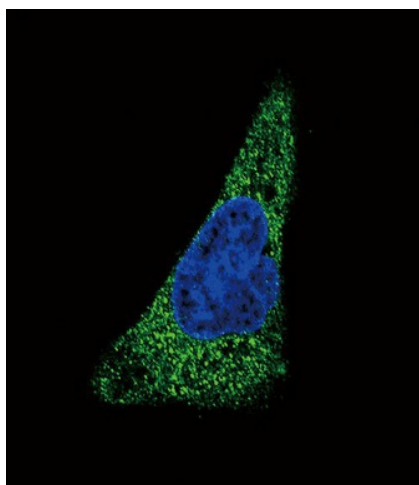
Product Type:	Primary Antibodies
Applications:	IF, WB
Recommended Dilution:	IF: 1:10~50, WB: 1:1000
Reactivity:	Mouse
Host:	Rabbit
Isotype:	IgG
Clonality:	Polyclonal
Immunogen:	This SLC11A2 antibody is generated from rabbits immunized with a KLH conjugated synthetic peptide between 262-291 amino acids from the Central region of human SLC11A2.
Formulation:	Purified polyclonal antibody supplied in PBS with 0.09% (W/V) sodium azide.
Concentration:	lot specific
Purification:	This antibody is purified through a protein A column, followed by peptide affinity purification.
Conjugation:	Unconjugated
Storage:	Store at -20°C as received.
Stability:	Stable for 12 months from date of receipt.
Predicted Protein Size:	62266 Da
Gene Name:	solute carrier family 11 member 2
Database Link:	<a href="#">NP_000608</a> <a href="#">Entrez Gene 4891 Human P49281</a>
Synonyms:	DCT1; DMT1; NRAMP2
Protein Families:	Transmembrane
Protein Pathways:	Lysosome



[View online »](#)

**Product images:**

SLC11A2 Antibody (Center) (Cat. #TA324527) western blot analysis in mouse cerebellum tissue lysates (35ug/lane). This demonstrates the SLC11A2 antibody detected the SLC11A2 protein (arrow).



Confocal immunofluorescent analysis of SLC11A2 Antibody (Center) (Cat#[TA324527]) with HepG2 cell followed by Alexa Fluor 488-conjugated goat anti-rabbit IgG (green). DAPI was used to stain the cell nuclear (blue).