

Product datasheet for **TA324524S**

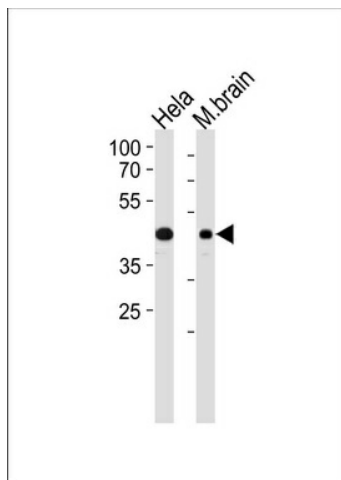
TDP43 (TARDBP) Rabbit Polyclonal Antibody

Product data:

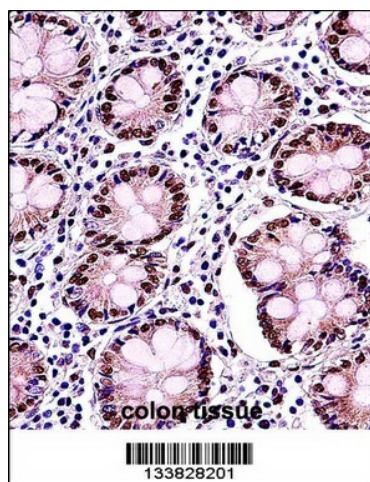
Product Type:	Primary Antibodies
Applications:	IF, IHC, WB
Recommended Dilution:	WB: 1:1000, IF: 1:10~50, IHC: 1:10~50
Reactivity:	Human, Mouse (Predicted: Chicken)
Host:	Rabbit
Isotype:	IgG
Clonality:	Polyclonal
Immunogen:	This TARDBP antibody is generated from rabbits immunized with a KLH conjugated synthetic peptide between 1-30 amino acids from the N-terminal region of human TARDBP.
Formulation:	Purified polyclonal antibody supplied in PBS with 0.09% (W/V) sodium azide.
Concentration:	lot specific
Purification:	This antibody is purified through a protein A column, followed by peptide affinity purification.
Conjugation:	Unconjugated
Storage:	Store at -20°C as received.
Stability:	Stable for 12 months from date of receipt.
Predicted Protein Size:	44740 Da
Gene Name:	TAR DNA binding protein
Database Link:	NP_031401 Entrez Gene 230908 Mouse Entrez Gene 23435 Human Q13148
Synonyms:	ALS10; TDP-43
Protein Families:	Transcription Factors


[View online »](#)

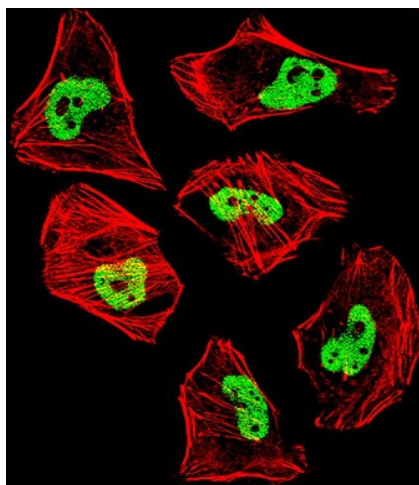
Product images:



TARDBP Antibody (N-term) (Cat. # [TA324524]) western blot analysis in HeLa cell line and mouse brain lysates (35ug/lane). This demonstrates the TARDBP antibody detected the TARDBP protein (arrow).



TARDBP Antibody (N-term) (Cat. # [TA324524]) immunohistochemistry analysis in formalin fixed and paraffin embedded human colon tissue followed by peroxidase conjugation of the secondary antibody and DAB staining. This data demonstrates the use of TARDBP Antibody (N-term) for immunohistochemistry. Clinical relevance has not been evaluated.



IF image of HeLa cell stained with TARDBP Antibody (N-term) (Cat#[TA324524]). HeLa cells were incubated with TARDBP primary antibody (1:25, 1 h at 37°C). For secondary antibody, Alexa Fluor® 488 conjugated donkey anti-rabbit antibody (green) was used (1:400). Cytoplasmic actin was counterstained with Alexa Fluor® 555 (red) conjugated Phalloidin (7 units/ml). Nuclei were counterstained with DAPI (blue). TARDBP immunoreactivity is localized to nucleus significantly and Cytoplasm weakly.