

Product datasheet for **TA324522S**

Sumo 1 (SUMO1) Rabbit Polyclonal Antibody

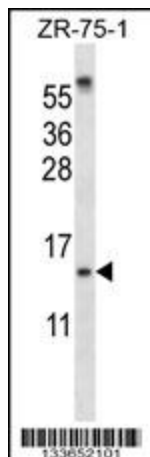
Product data:

Product Type:	Primary Antibodies
Applications:	IF, IHC, WB
Recommended Dilution:	WB: 1:1000, IF: 1:10~50, IHC: 1:10~50
Reactivity:	Human (Predicted: Mouse, Rat, Bovine, Pig)
Host:	Rabbit
Isotype:	IgG
Clonality:	Polyclonal
Immunogen:	This SUMO1 antibody is generated from rabbits immunized with a KLH conjugated synthetic peptide between 1-30 amino acids from the N-terminal region of human SUMO1.
Formulation:	Purified polyclonal antibody supplied in PBS with 0.09% (W/V) sodium azide.
Concentration:	lot specific
Purification:	This antibody is purified through a protein A column, followed by peptide affinity purification.
Conjugation:	Unconjugated
Storage:	Store at -20°C as received.
Stability:	Stable for 12 months from date of receipt.
Predicted Protein Size:	11557 Da
Gene Name:	small ubiquitin-like modifier 1
Database Link:	NP_001005781 Entrez Gene 22218 Mouse Entrez Gene 301442 Rat Entrez Gene 7341 Human P63165
Synonyms:	DAP1; GMP1; OFC10; PIC1; SENP2; SMT3; SMT3C; SMT3H3; UBL1
Protein Families:	Druggable Genome, Stem cell - Pluripotency, Transcription Factors

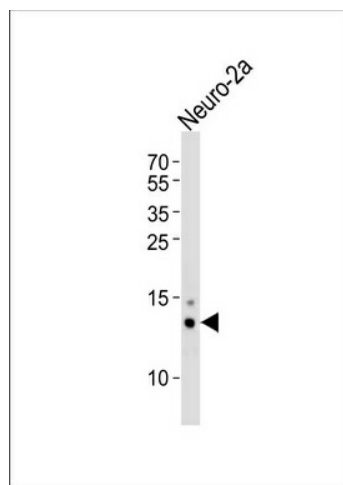


[View online »](#)

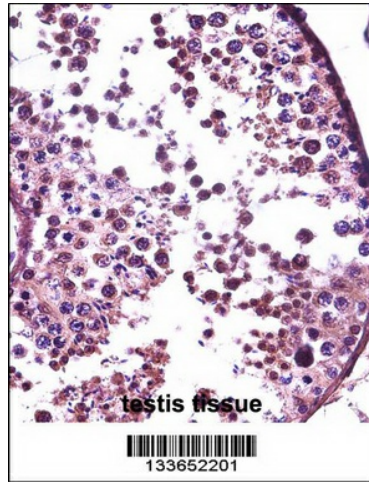
Product images:



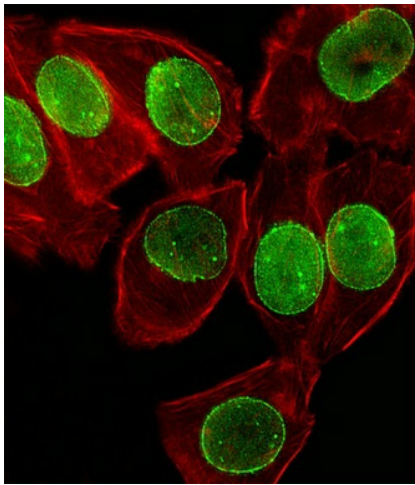
SUMO1 Antibody (N-term) (Cat. #[TA324522]) western blot analysis in ZR-75-1 cell line lysates (35ug/lane). This demonstrates the SUMO1 antibody detected the SUMO1 protein (arrow).



Western blot analysis of lysate from mouse Neuro-2a cell line, using SUMO1 Antibody (N-term) (Cat. #[TA324522]). [TA324522] was diluted at 1:1000 at each lane. A goat anti-rabbit IgG H&L (HRP) at 1:5000 dilution was used as the secondary antibody. Lysate at 35ug.



SUMO1 Antibody (N-term) (Cat. # [TA324522]) immunohistochemistry analysis in formalin fixed and paraffin embedded human testis tissue followed by peroxidase conjugation of the secondary antibody and DAB staining. This data demonstrates the use of SUMO1 Antibody (N-term) for immunohistochemistry. Clinical relevance has not been evaluated.



IF image of A549 cell stained with SUMO1 Antibody (N-term) (Cat#[TA324522]). A549 cells were incubated with SUMO1 primary antibody (1:25, 1 h at 37°C). For secondary antibody, Alexa Fluor® 488 conjugated donkey anti-rabbit antibody (green) was used (1:400). Cytoplasmic actin was counterstained with Alexa Fluor® 555 (red) conjugated Phalloidin (7 units/ml). SUMO1 immunoreactivity is localized to Nuclear Membrane significantly.