

Product datasheet for **TA324521**

FAM130A1 (CSRNP2) Rabbit Polyclonal Antibody

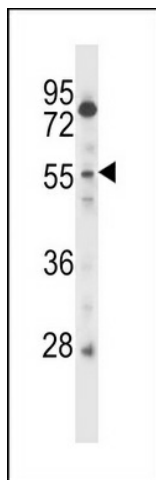
Product data:

Product Type:	Primary Antibodies
Applications:	IF, WB
Recommended Dilution:	IF: 1:10~50, WB: 1:1000
Reactivity:	Human
Host:	Rabbit
Isotype:	IgG
Clonality:	Polyclonal
Immunogen:	This CSRNP2 antibody is generated from rabbits immunized with a KLH conjugated synthetic peptide between 509-538 amino acids from the C-terminal region of human CSRNP2.
Formulation:	Purified polyclonal antibody supplied in PBS with 0.09% (W/V) sodium azide.
Concentration:	lot specific
Purification:	This antibody is purified through a protein A column, followed by peptide affinity purification.
Conjugation:	Unconjugated
Storage:	Store at -20°C as received.
Stability:	Stable for 12 months from date of receipt.
Predicted Protein Size:	59591 Da
Gene Name:	cysteine and serine rich nuclear protein 2
Database Link:	NP_110436 Entrez Gene 81566 Human Q9H175
Synonyms:	C12orf2; C12orf22; FAM130A1; PPP1R72; TAIP-12

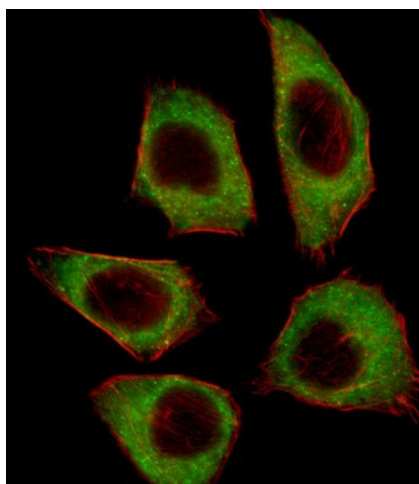


[View online »](#)

Product images:



CSRNP2 Antibody (C-term) (Cat. #TA324521) western blot analysis in CEM cell line lysates (35ug/lane). This demonstrates the CSRNP2 antibody detected the CSRNP2 protein (arrow).



IF image of A549 cell stained with CSRNP2 Antibody (C-term) (Cat#TA324521). A549 cells were incubated with CSRNP2 primary antibody (1:25, 1 h at 37°C). For secondary antibody, Alexa Fluor® 488 conjugated donkey anti-rabbit antibody (green) was used (1:400). Cytoplasmic actin was counterstained with Alexa Fluor® 555 (red) conjugated Phalloidin (7 units/ml). CSRNP2 immunoreactivity is localized to Cytoplasm significantly.