

## Product datasheet for **TA324518S**

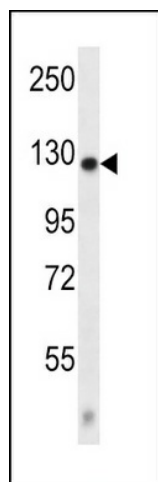
### CACNA2D2 Rabbit Polyclonal Antibody

#### Product data:

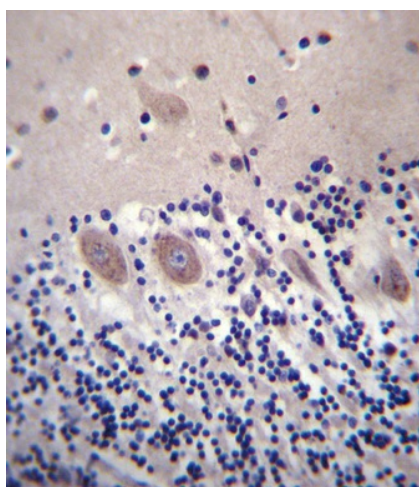
Product Type:	Primary Antibodies
Applications:	IF, IHC, WB
Recommended Dilution:	IF: 1:10~50, WB: 1:1000, IHC: 1:10~50
Reactivity:	Mouse
Host:	Rabbit
Isotype:	IgG
Clonality:	Polyclonal
Immunogen:	This CACNA2D2 antibody is generated from rabbits immunized with a KLH conjugated synthetic peptide between 643-671 amino acids from the Central region of human CACNA2D2.
Formulation:	Purified polyclonal antibody supplied in PBS with 0.09% (W/V) sodium azide.
Concentration:	lot specific
Purification:	This antibody is purified through a protein A column, followed by peptide affinity purification.
Conjugation:	Unconjugated
Storage:	Store at -20°C as received.
Stability:	Stable for 12 months from date of receipt.
Predicted Protein Size:	129817 Da
Gene Name:	calcium voltage-gated channel auxiliary subunit alpha2delta 2
Database Link:	<a href="#">NP_006021</a> <a href="#">Entrez Gene 56808 Mouse</a> <a href="#">Q9NY47</a>
Synonyms:	CACNA2D
Protein Families:	Druggable Genome, Ion Channels: Other
Protein Pathways:	Arrhythmogenic right ventricular cardiomyopathy (ARVC), Cardiac muscle contraction, Dilated cardiomyopathy, Hypertrophic cardiomyopathy (HCM), MAPK signaling pathway



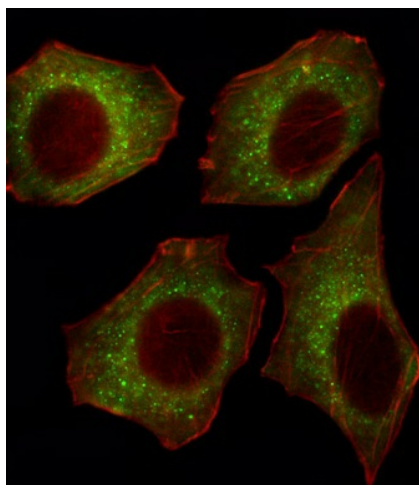
[View online »](#)

**Product images:**


CACNA2D2 Antibody (Center) (Cat. # [TA324518]) western blot analysis in mouse kidney tissue lysates (35ug/lane). This demonstrates the CACNA2D2 antibody detected the CACNA2D2 protein (arrow).



CACNA2D2 Antibody (Center) (Cat. # [TA324518]) immunohistochemistry analysis in formalin fixed and paraffin embedded human cerebellum tissue followed by peroxidase conjugation of the secondary antibody and DAB staining. This data demonstrates the use of CACNA2D2 Antibody (Center) for immunohistochemistry. Clinical relevance has not been evaluated.



IF image of U251 cell stained with CACNA2D2 Antibody (Center) (Cat#[TA324518]). U251 cells were incubated with CACNA2D2 primary antibody (1:25, 1 h at 37°C). For secondary antibody, Alexa Fluor® 488 conjugated donkey anti-rabbit antibody (green) was used (1:400). Cytoplasmic actin was counterstained with Alexa Fluor® 555 (red) conjugated Phalloidin (7 units/ml). CACNA2D2 immunoreactivity is localized to Cytoplasm significantly.