

Product datasheet for **TA324517S**

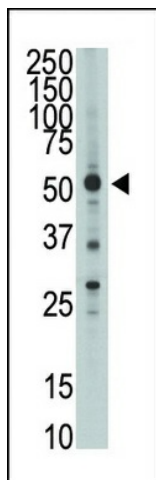
HTRA1 Rabbit Polyclonal Antibody

Product data:

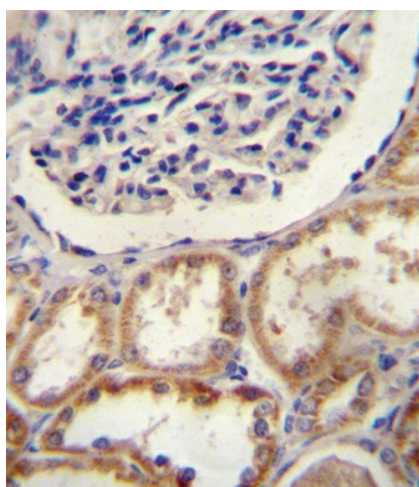
Product Type:	Primary Antibodies
Applications:	IF, IHC, WB
Recommended Dilution:	WB: 1:1000, IHC: 1:10~50, IF: 1:10~50
Reactivity:	Human, Mouse
Host:	Rabbit
Isotype:	IgG
Clonality:	Polyclonal
Immunogen:	This HtrA1 antibody is generated from rabbits immunized with a KLH conjugated synthetic peptide between 116-147 amino acids from the N-terminal region of human HtrA1.
Formulation:	Purified polyclonal antibody supplied in PBS with 0.09% (W/V) sodium azide.
Concentration:	lot specific
Purification:	This antibody is prepared by Saturated Ammonium Sulfate (SAS) precipitation followed by dialysis against PBS.
Conjugation:	Unconjugated
Storage:	Store at -20°C as received.
Stability:	Stable for 12 months from date of receipt.
Predicted Protein Size:	51287 Da
Gene Name:	HtrA serine peptidase 1
Database Link:	NP_002766 Entrez Gene 56213 Mouse Entrez Gene 5654 Human Q92743
Synonyms:	ARMD7; CADASIL2; CARASIL; HtrA; L56; ORF480; PRSS11
Protein Families:	Druggable Genome, Protease, Secreted Protein



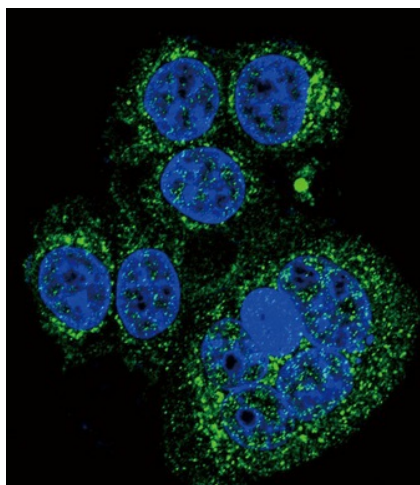
[View online »](#)

Product images:

The anti-HtrA1 N-term Pab (Cat. # [TA324517]) is used in Western blot to detect HtrA1 in mouse brain tissue lysate.



HtrA1 Antibody (N-term) (Cat. # [TA324517]) immunohistochemistry analysis in formalin fixed and paraffin embedded human kidney tissue followed by peroxidase conjugation of the secondary antibody and DAB staining. This data demonstrates the use of HtrA1 Antibody (N-term) for immunohistochemistry. Clinical relevance has not been evaluated.



Confocal immunofluorescent analysis of HtrA1 Antibody (N-term) (Cat#[TA324517]) with HeLa cell followed by Alexa Fluor 488-conjugated goat anti-rabbit IgG (green). DAPI was used to stain the cell nuclear (blue).