

Product datasheet for **TA324516S**

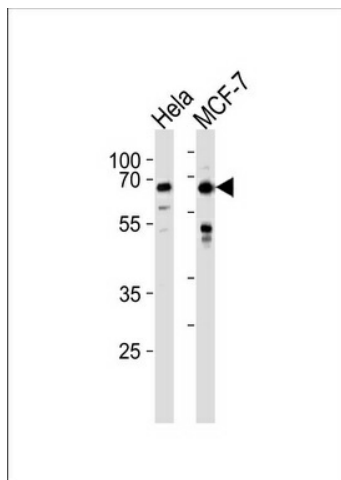
FOXO3 Rabbit Polyclonal Antibody

Product data:

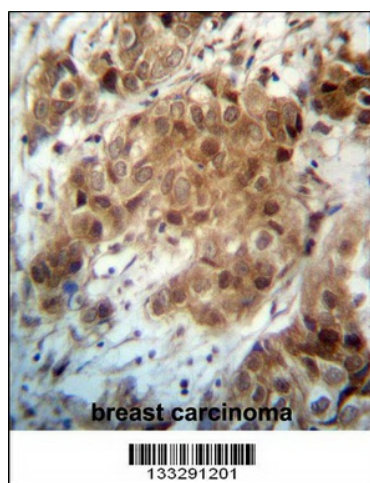
Product Type:	Primary Antibodies
Applications:	IHC, WB
Recommended Dilution:	WB: 1:1000, IHC: 1:10~50
Reactivity:	Human (Predicted: Mouse)
Host:	Rabbit
Isotype:	IgG
Clonality:	Polyclonal
Immunogen:	This FOXO3 antibody is generated from rabbits immunized with a KLH conjugated synthetic peptide between 1-30 amino acids from the N-terminal region of human FOXO3.
Formulation:	Purified polyclonal antibody supplied in PBS with 0.09% (W/V) sodium azide.
Concentration:	lot specific
Purification:	This antibody is purified through a protein A column, followed by peptide affinity purification.
Conjugation:	Unconjugated
Storage:	Store at -20°C as received.
Stability:	Stable for 12 months from date of receipt.
Predicted Protein Size:	71277 Da
Gene Name:	forkhead box O3
Database Link:	NP_001446 Entrez Gene 56484 Mouse Entrez Gene 2309 Human O43524
Synonyms:	AF6q21; FKHL1; FKHL1P2; FOXO2; FOXO3A
Protein Families:	Druggable Genome, Transcription Factors
Protein Pathways:	Chemokine signaling pathway, Endometrial cancer, Neurotrophin signaling pathway, Non-small cell lung cancer



[View online »](#)

Product images:


FOXO3 Antibody (N-term) (Cat. # [TA324516]) western blot analysis in HeLa, MCF-7 cell line lysates (35ug/lane). This demonstrates the FOXO3 antibody detected the FOXO3 protein (arrow).



FOXO3 Antibody (N-term) (Cat. # [TA324516]) immunohistochemistry analysis in formalin fixed and paraffin embedded human breast carcinoma followed by peroxidase conjugation of the secondary antibody and DAB staining. This data demonstrates the use of FOXO3 Antibody (N-term) for immunohistochemistry. Clinical relevance has not been evaluated.