

Product datasheet for **TA324515**

HDAC1 Rabbit Polyclonal Antibody

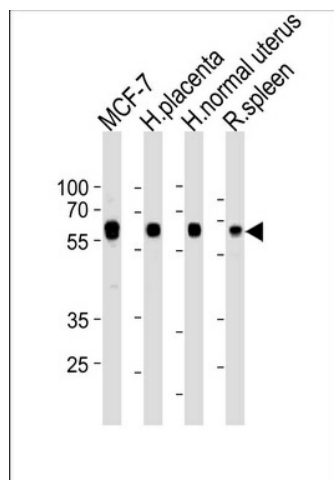
Product data:

Product Type:	Primary Antibodies
Applications:	IF, WB
Recommended Dilution:	WB 1:1000, IF: 1:10 - 50
Reactivity:	Human, Rat (Predicted: Mouse, Bovine, Chicken, Xenopus)
Host:	Rabbit
Isotype:	IgG
Clonality:	Polyclonal
Immunogen:	This HDAC1 antibody is generated from rabbits immunized with a KLH conjugated synthetic peptide between 70-99 amino acids from the N-terminal region of human HDAC1.
Formulation:	Purified polyclonal antibody supplied in PBS with 0.09% (W/V) sodium azide.
Concentration:	lot specific
Purification:	This antibody is purified through a protein A column, followed by peptide affinity purification.
Conjugation:	Unconjugated
Storage:	Store at -20°C as received.
Stability:	Stable for 12 months from date of receipt.
Predicted Protein Size:	55103 Da
Gene Name:	histone deacetylase 1
Database Link:	NP_004955 Entrez Gene 297893 RatEntrez Gene 433759 MouseEntrez Gene 3065 Human Q13547
Synonyms:	GON-10; HD1; RPD3; RPD3L1
Protein Families:	Adult stem cells, Druggable Genome, Stem cell - Pluripotency, Stem cell relevant signaling - DSL/Notch pathway, Transcription Factors
Protein Pathways:	Cell cycle, Chronic myeloid leukemia, Huntington's disease, Notch signaling pathway, Pathways in cancer

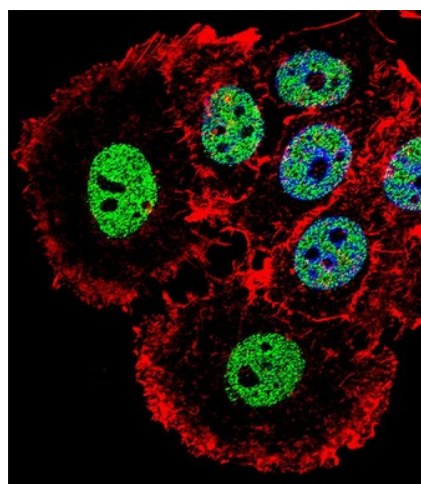


[View online »](#)

Product images:



HDAC1 Antibody (N-term) (Cat. #TA324515) western blot analysis in MCF-7 cell line and human placenta and normal uterus, rat spleen lysates (35ug/lane). This demonstrates the HDAC1 antibody detected the HDAC1 protein (arrow).



IF image of MCF-7 cell stained with HDAC1 Antibody (N-term) (Cat#TA324515). MCF-7 cells were incubated with HDAC1 primary antibody (1:25, 1 h at 37°C). For secondary antibody, Alexa Fluor® 488 conjugated donkey anti-rabbit antibody (green) was used (1:400). Cytoplasmic actin was counterstained with Alexa Fluor® 555 (red) conjugated Phalloidin (7 units/ml). Nuclei were counterstained with DAPI (blue). HDAC1 immunoreactivity is localized to Nucleus significantly.