

## Product datasheet for **TA324514**

### **BAD Rabbit Polyclonal Antibody**

#### **Product data:**

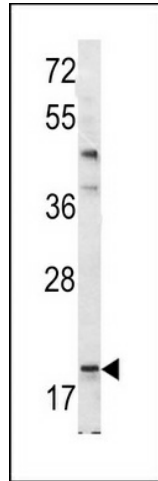
<b>Product Type:</b>	Primary Antibodies
<b>Applications:</b>	FC, IHC, WB
<b>Recommended Dilution:</b>	WB: 1:1000, IHC: 1:50~100, FC: 1:10~50
<b>Reactivity:</b>	Human, Mouse
<b>Host:</b>	Rabbit
<b>Isotype:</b>	IgG
<b>Clonality:</b>	Polyclonal
<b>Immunogen:</b>	This Bad BH3 Domain antibody is generated from rabbits immunized with a KLH conjugated synthetic peptide between 92-127 amino acids from human Bad BH3 Domain.
<b>Formulation:</b>	Purified polyclonal antibody supplied in PBS with 0.09% (W/V) sodium azide.
<b>Concentration:</b>	lot specific
<b>Purification:</b>	This antibody is prepared by Saturated Ammonium Sulfate (SAS) precipitation followed by dialysis against PBS.
<b>Conjugation:</b>	Unconjugated
<b>Storage:</b>	Store at -20°C as received.
<b>Stability:</b>	Stable for 12 months from date of receipt.
<b>Predicted Protein Size:</b>	18392 Da
<b>Gene Name:</b>	BCL2 associated agonist of cell death
<b>Database Link:</b>	<a href="#">NP_004313</a> <a href="#">Entrez Gene 12015 Mouse</a> <a href="#">Entrez Gene 572 Human</a> <a href="#">Q92934</a>
<b>Synonyms:</b>	BBC2; BCL2L8
<b>Protein Families:</b>	Druggable Genome



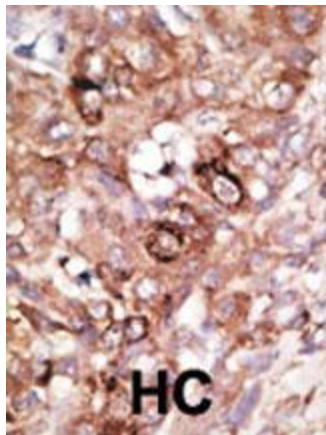
[View online »](#)

**Protein Pathways:**

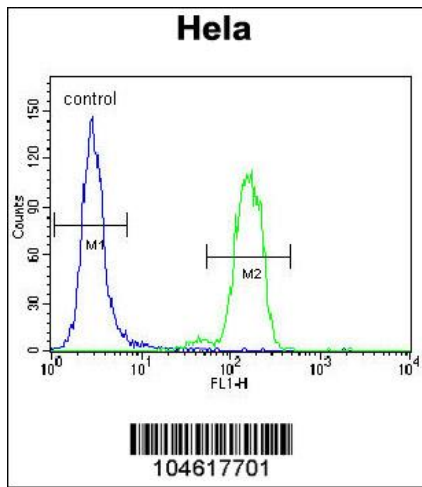
Acute myeloid leukemia, Alzheimer's disease, Amyotrophic lateral sclerosis (ALS), Apoptosis, Chronic myeloid leukemia, Colorectal cancer, Endometrial cancer, ErbB signaling pathway, Focal adhesion, Insulin signaling pathway, Melanoma, Neurotrophin signaling pathway, Non-small cell lung cancer, Pancreatic cancer, Pathways in cancer, Prostate cancer, VEGF signaling pathway

**Product images:**

Western blot analysis of Bad BH3 Domain antibody (Cat.# TA324514) in mouse bladder tissue lysates (35ug/lane). Bad (arrow) was detected using the purified Pab.



Formalin-fixed and paraffin-embedded human cancer tissue reacted with the primary antibody, which was peroxidase-conjugated to the secondary antibody, followed by AEC staining. This data demonstrates the use of this antibody for immunohistochemistry; clinical relevance has not been evaluated. BC = breast carcinoma; HC = hepatocarcinoma.



Bad BH3 Domain Antibody (Cat. #TA324514) flow cytometric analysis of HeLa cells (right histogram) compared to a negative control cell (left histogram). FITC-conjugated goat-anti-rabbit secondary antibodies were used for the analysis.