

Product datasheet for **TA324510**

Caspase-6 (CASP6) Rabbit Polyclonal Antibody

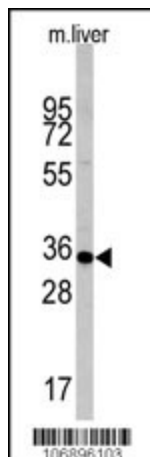
Product data:

Product Type:	Primary Antibodies
Applications:	IHC, WB
Recommended Dilution:	WB: 1:1000, IHC: 1:10~50
Reactivity:	Human, Mouse (Predicted: Rat, Bovine)
Host:	Rabbit
Isotype:	IgG
Clonality:	Polyclonal
Immunogen:	This CASP6 antibody is generated from rabbits immunized with a KLH conjugated synthetic peptide between 235-263 amino acids from the C-terminal region of human CASP6.
Formulation:	Purified polyclonal antibody supplied in PBS with 0.09% (W/V) sodium azide.
Concentration:	lot specific
Purification:	This antibody is purified through a protein A column, followed by peptide affinity purification.
Conjugation:	Unconjugated
Storage:	Store at -20°C as received.
Stability:	Stable for 12 months from date of receipt.
Predicted Protein Size:	33310 Da
Gene Name:	caspase 6
Database Link:	NP_001217 Entrez Gene 12368 MouseEntrez Gene 83584 RatEntrez Gene 839 Human P55212
Synonyms:	MCH2
Protein Families:	Druggable Genome, Protease, Stem cell - Pluripotency
Protein Pathways:	Apoptosis

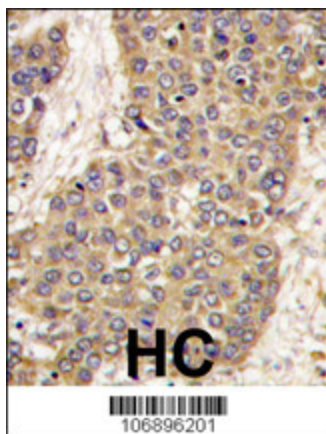


[View online »](#)

Product images:



Western blot analysis of anti-CASP6 Antibody (C-term) (Cat.#TA324510) in mouse liver tissue lysates (35ug/lane). CASP6 (arrow) was detected using the purified Pab.



Formalin-fixed and paraffin-embedded human hepatocarcinoma tissue reacted with CASP6 antibody (C-term), which was peroxidase-conjugated to the secondary antibody, followed by DAB staining. This data demonstrates the use of this antibody for immunohistochemistry; clinical relevance has not been evaluated.