

Product datasheet for **TA324506**

PAI1 (SERPINE1) Rabbit Polyclonal Antibody

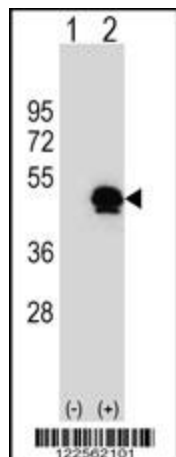
Product data:

Product Type:	Primary Antibodies
Applications:	FC, WB
Recommended Dilution:	WB: 1:1000, FC: 1:10~50
Reactivity:	Human
Host:	Rabbit
Isotype:	IgG
Clonality:	Polyclonal
Immunogen:	This SERPINE1 antibody is generated from rabbits immunized with a KLH conjugated synthetic peptide between 188-216 amino acids from the Central region of human SERPINE1.
Formulation:	Purified polyclonal antibody supplied in PBS with 0.09% (W/V) sodium azide.
Concentration:	lot specific
Purification:	This antibody is purified through a protein A column, followed by peptide affinity purification.
Conjugation:	Unconjugated
Storage:	Store at -20°C as received.
Stability:	Stable for 12 months from date of receipt.
Predicted Protein Size:	45060 Da
Gene Name:	serpin family E member 1
Database Link:	NP_000593 Entrez Gene 5054 Human P05121
Synonyms:	PAI; PAI-1; PAI1; PLANH1
Protein Families:	Druggable Genome, Secreted Protein
Protein Pathways:	Complement and coagulation cascades, p53 signaling pathway

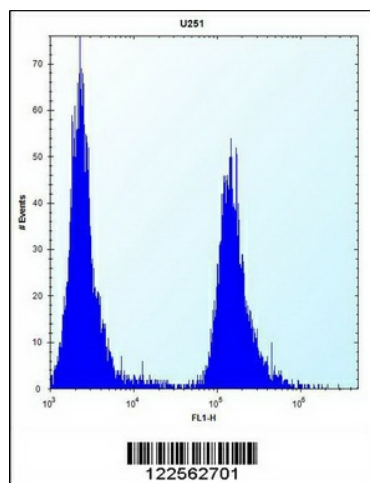


[View online »](#)

Product images:



Western blot analysis of SERPINE1 (arrow) using rabbit polyclonal SERPINE1 Antibody (Center) (Cat. #TA324506). 293 cell lysates (2 ug/lane) either nontransfected (Lane 1) or transiently transfected (Lane 2) with the SERPINE1 gene.



SERPINE1 Antibody (Center) (Cat. #TA324506) flow cytometric analysis of U251 cells (right histogram) compared to a negative control cell (left histogram). FITC-conjugated goat-anti-rabbit secondary antibodies were used for the analysis.