

Product datasheet for **TA324505S**

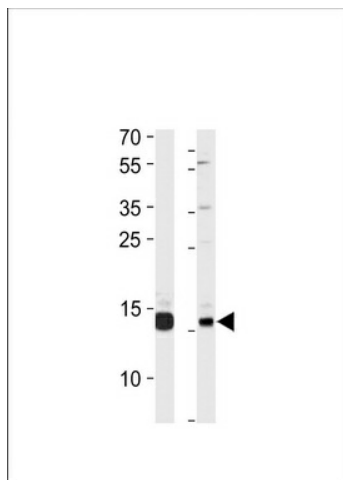
Sumo 3 (SUMO3) Rabbit Polyclonal Antibody

Product data:

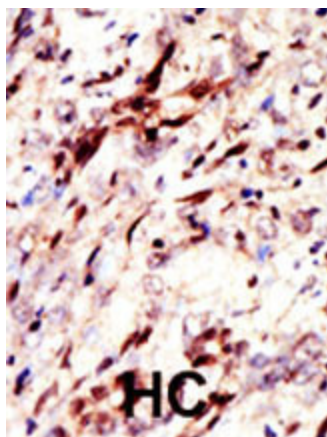
Product Type:	Primary Antibodies
Applications:	IF, IHC, WB
Recommended Dilution:	WB: 1:1000, IF: 1:10~50, IHC: 1:50~100
Reactivity:	Human, Rat
Host:	Rabbit
Isotype:	IgG
Clonality:	Polyclonal
Immunogen:	This Pan SUMO antibody recognizes all 3 SUMO isoforms, including human SUMO1, SUMO2 and SUMO3. This antibody is generated from rabbits immunized with a recombinant protein encoding full length human SUMO3.
Formulation:	Purified polyclonal antibody supplied in PBS with 0.09% (W/V) sodium azide.
Concentration:	lot specific
Purification:	This antibody is prepared by Saturated Ammonium Sulfate (SAS) precipitation followed by dialysis against PBS.
Conjugation:	Unconjugated
Storage:	Store at -20°C as received.
Stability:	Stable for 12 months from date of receipt.
Predicted Protein Size:	11637 Da
Gene Name:	small ubiquitin-like modifier 3
Database Link:	NP_008867 Entrez Gene 499417 Rat Entrez Gene 6612 Human P55854
Synonyms:	SMT3A; Smt3B; SMT3H1; SUMO-3
Protein Families:	Druggable Genome


[View online »](#)

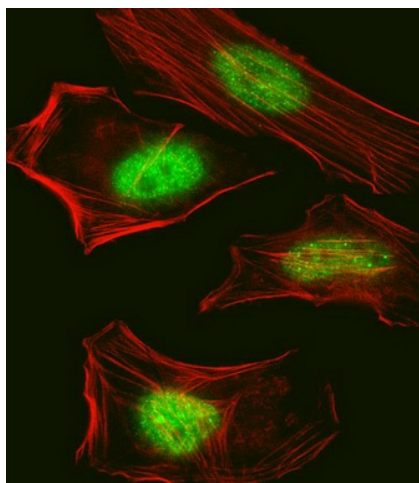
Product images:



SUMO3 Antibody (Cat. #TA324505S) western blot analysis in 293 cell line and rat liver tissue lysates (35ug/lane). This demonstrates the SUMO3 antibody detected the SUMO3 protein (arrow).



Formalin-fixed and paraffin-embedded human cancer tissue reacted with the primary antibody, which was peroxidase-conjugated to the secondary antibody, followed by AEC staining. This data demonstrates the use of this antibody for immunohistochemistry; clinical relevance has not been evaluated. BC = breast carcinoma; HC = hepatocarcinoma.



IF image of HeLa cell stained with Pan SUMO Antibody (Cat#[TA324505]). HeLa cells were incubated with Pan SUMO primary antibody (1:25, 1 h at 37°C). For secondary antibody, Alexa Fluor® 488 conjugated donkey anti-rabbit antibody (green) was used (1:400). Cytoplasmic actin was counterstained with Alexa Fluor® 555 (red) conjugated Phalloidin (7 units/ml). Nuclei were counterstained with DAPI (blue). Pan SUMO immunoreactivity is localized to Nucleus significantly.