

Product datasheet for **TA324504S**

Glutathione S Transferase theta 1 (GSTT1) Rabbit Polyclonal Antibody

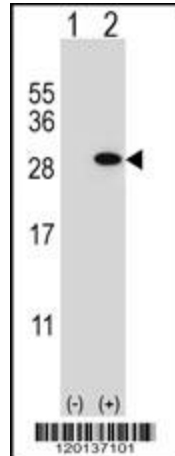
Product data:

Product Type:	Primary Antibodies
Applications:	FC, WB
Recommended Dilution:	WB: 1:1000, FC: 1:10~50
Reactivity:	Human
Host:	Rabbit
Isotype:	IgG
Clonality:	Polyclonal
Immunogen:	This GSTT1 antibody is generated from rabbits immunized with a KLH conjugated synthetic peptide between 7-34 amino acids from the N-terminal region of human GSTT1.
Formulation:	Purified polyclonal antibody supplied in PBS with 0.09% (W/V) sodium azide.
Concentration:	lot specific
Purification:	This antibody is purified through a protein A column, followed by peptide affinity purification.
Conjugation:	Unconjugated
Storage:	Store at -20°C as received.
Stability:	Stable for 12 months from date of receipt.
Predicted Protein Size:	27335 Da
Gene Name:	glutathione S-transferase theta 1
Database Link:	NP_000844 Entrez Gene 2952 Human P30711
Synonyms:	glutathione S-transferase theta 1
Protein Pathways:	Drug metabolism - cytochrome P450, Glutathione metabolism, Metabolism of xenobiotics by cytochrome P450

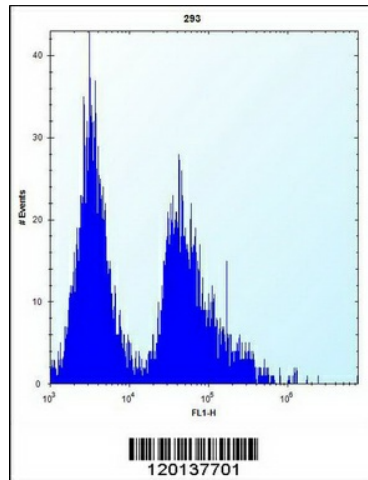


[View online »](#)

Product images:



Western blot analysis of GSTT1 (arrow) using rabbit polyclonal GSTT1 Antibody (N-term) (Cat. # [TA324504]). 293 cell lysates (2 ug/lane) either nontransfected (Lane 1) or transiently transfected (Lane 2) with the GSTT1 gene.



GSTT1 Antibody (N-term) (Cat. # [TA324504]) flow cytometric analysis of 293 cells (right histogram) compared to a negative control cell (left histogram). FITC-conjugated goat-anti-rabbit secondary antibodies were used for the analysis.