

Product datasheet for **TA324502**

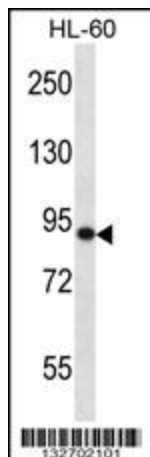
SP140 Rabbit Polyclonal Antibody

Product data:

Product Type:	Primary Antibodies
Applications:	IF, IHC, WB
Recommended Dilution:	WB: 1:1000, IHC: 1:10~50, IF: 1:10~50
Reactivity:	Human
Host:	Rabbit
Isotype:	IgG
Clonality:	Polyclonal
Immunogen:	This SP140 antibody is generated from rabbits immunized with a KLH conjugated synthetic peptide between 272-301 amino acids from the Central region of human SP140.
Formulation:	Purified polyclonal antibody supplied in PBS with 0.09% (W/V) sodium azide.
Concentration:	lot specific
Purification:	This antibody is purified through a protein A column, followed by peptide affinity purification.
Conjugation:	Unconjugated
Storage:	Store at -20°C as received.
Stability:	Stable for 12 months from date of receipt.
Predicted Protein Size:	98223 Da
Gene Name:	SP140 nuclear body protein
Database Link:	NP_001005176 Entrez Gene 11262 Human Q13342
Synonyms:	LYSP100; LYSP100-A; LYSP100-B
Protein Families:	Druggable Genome, Transcription Factors



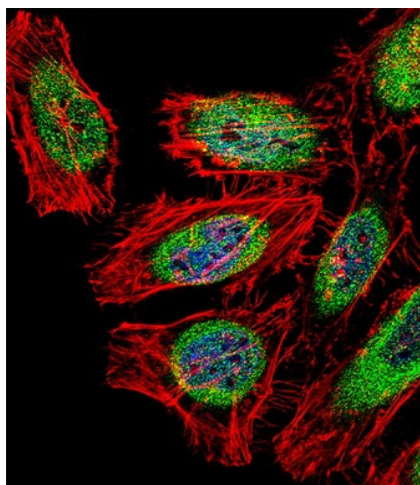
[View online »](#)

Product images:

SP140 Antibody (Center) (Cat. #TA324502) western blot analysis in HL-60 cell line lysates (35ug/lane). This demonstrates the SP140 antibody detected the SP140 protein (arrow).



SP140 Antibody (Center) (Cat. #TA324502) immunohistochemistry analysis in formalin fixed and paraffin embedded human kidney tissue followed by peroxidase conjugation of the secondary antibody and DAB staining. This data demonstrates the use of SP140 Antibody (Center) for immunohistochemistry. Clinical relevance has not been evaluated.



IF image of HeLa cell stained with SP140 Antibody (Center) (Cat#TA324502). HeLa cells were incubated with SP140 primary antibody (1:25, 1 h at 37°C). For secondary antibody, Alexa Fluor® 488 conjugated donkey anti-rabbit antibody (green) was used (1:400). Cytoplasmic actin was counterstained with Alexa Fluor® 555 (red) conjugated Phalloidin (7 units/ml). Nuclei were counterstained with DAPI (blue). SP140 immunoreactivity is localized to Cytoplasm and Nucleus significantly.