

## Product datasheet for **TA324501S**

### TATA binding protein (TBP) Mouse Monoclonal Antibody [Clone ID: 830CT4.3.3]

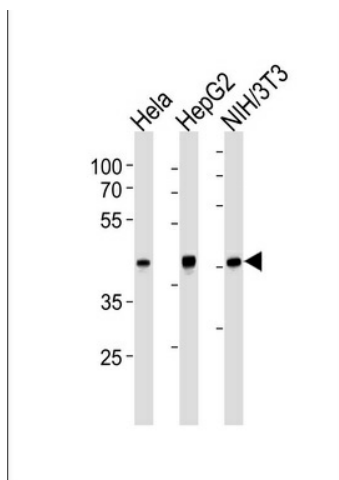
#### Product data:

|                         |   |
|-------------------------|---|
| Product Type:           | Primary Antibodies  |
| Clone Name:             | 830CT4.3.3  |
| Applications:           | IF, WB  |
| Recommended Dilution:   | WB 1:1000, IF 1:100   |
| Reactivity:             | Human, Mouse  |
| Host:                   | Mouse   |
| Isotype:                | IgG1  |
| Clonality:              | Monoclonal  |
| Immunogen:              | Purified His-tagged TBP protein was used to produced this monoclonal antibody.  |
| Formulation:            | Purified monoclonal antibody supplied in PBS with 0.09% (W/V) sodium azide.   |
| Concentration:          | lot specific  |
| Purification:           | This antibody is purified through a protein G column, followed by dialysis against PBS.   |
| Conjugation:            | Unconjugated  |
| Storage:                | Store at -20°C as received.   |
| Stability:              | Stable for 12 months from date of receipt.  |
| Predicted Protein Size: | 37698 Da  |
| Gene Name:              | TATA-box binding protein  |
| Database Link:          | <a href="#">NP_003185</a><br><a href="#">Entrez Gene 21374 Mouse</a> <a href="#">Entrez Gene 6908 Human</a><br><a href="#">P20226</a> |
| Synonyms:               | GTF2D; GTF2D1; HDL4; SCA17; TFIID   |
| Protein Families:       | Druggable Genome, Transcription Factors   |
| Protein Pathways:       | Basal transcription factors, Huntington's disease   |

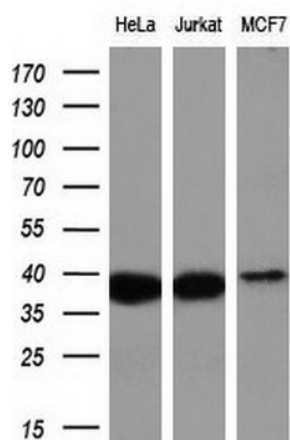


[View online »](#)

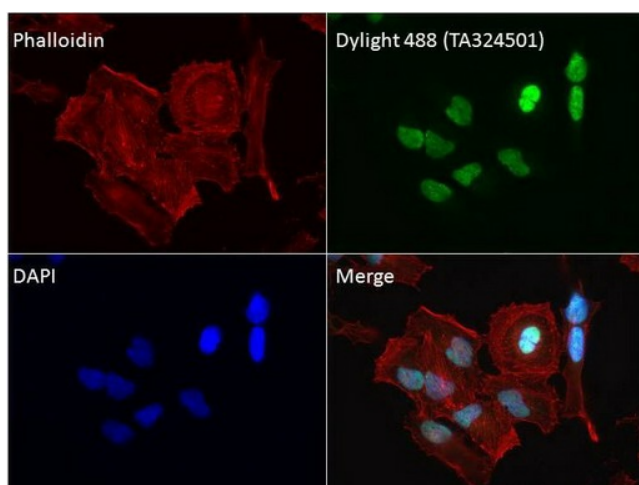
Product images:



TBP Antibody (Cat. #[TA324501]) western blot analysis in HeLa, HepG2, mouse NIH/3T3 cell line lysates (35ug/lane). This demonstrates the TBP antibody detected the TBP protein (arrow).



Western blot analysis of extracts (10ug) from 3 different cell lines by using anti-TBP monoclonal antibody (1:1000).



Immunofluorescent staining of HeLa cells using anti-TBP mouse monoclonal antibody ([TA324501]) (1:100).