

Product datasheet for **TA324499**

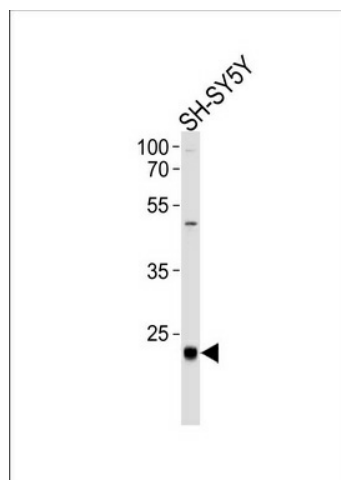
CEBPD Rabbit Polyclonal Antibody

Product data:

Product Type:	Primary Antibodies
Applications:	WB
Recommended Dilution:	WB: 1:1000
Reactivity:	Human (Predicted: Mouse, Rat, Bovine)
Host:	Rabbit
Isotype:	IgG
Clonality:	Polyclonal
Immunogen:	This CEBPD antibody is generated from rabbits immunized with a KLH conjugated synthetic peptide between 169-197 amino acids from the C-terminal region of human CEBPD.
Formulation:	Purified polyclonal antibody supplied in PBS with 0.09% (W/V) sodium azide.
Concentration:	lot specific
Purification:	This antibody is purified through a protein A column, followed by peptide affinity purification.
Conjugation:	Unconjugated
Storage:	Store at -20°C as received.
Stability:	Stable for 12 months from date of receipt.
Predicted Protein Size:	28467 Da
Gene Name:	CCAAT/enhancer binding protein delta
Database Link:	NP_005186 Entrez Gene 12609 Mouse Entrez Gene 25695 Rat Entrez Gene 1052 Human P49716
Synonyms:	C; CELF; CRP3; EBP-delta; NF-IL6-beta
Protein Families:	Druggable Genome, Transcription Factors



[View online »](#)

Product images:

CEBPD Antibody (C-term) (Cat. #TA324499)
western blot analysis in SH-SY5Y cell line lysates
(35ug/lane). This demonstrates the CEBPD
antibody detected the CEBPD protein (arrow).