

Product datasheet for **TA324498S**

MYOD1 Rabbit Polyclonal Antibody

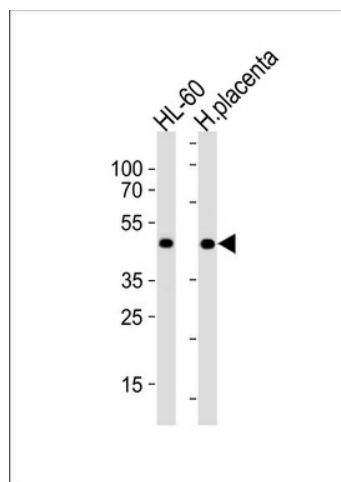
Product data:

Product Type:	Primary Antibodies
Applications:	IF, WB
Recommended Dilution:	WB: 1:1000, IF: 1:10~50
Reactivity:	Human
Host:	Rabbit
Isotype:	IgG
Clonality:	Polyclonal
Immunogen:	This MyoD1 antibody is generated from rabbits immunized with a KLH conjugated synthetic peptide between 211-240 amino acids from the Central region of human MyoD1.
Formulation:	Purified polyclonal antibody supplied in PBS with 0.09% (W/V) sodium azide.
Concentration:	lot specific
Purification:	This antibody is purified through a protein A column, followed by peptide affinity purification.
Conjugation:	Unconjugated
Storage:	Store at -20°C as received.
Stability:	Stable for 12 months from date of receipt.
Predicted Protein Size:	34501 Da
Gene Name:	myogenic differentiation 1
Database Link:	NP_002469 Entrez Gene 4654 Human P15172
Synonyms:	bHLHc1; MYF3; MYOD; PUM
Protein Families:	Druggable Genome, Transcription Factors

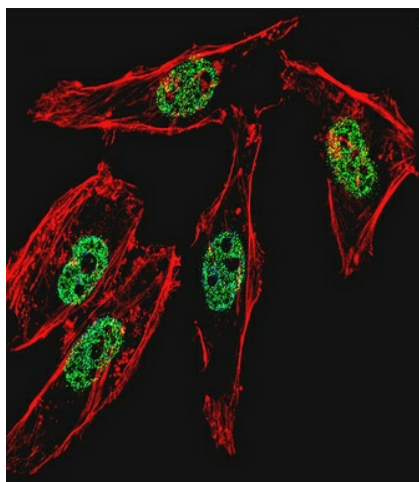


[View online »](#)

Product images:



MyoD1 Antibody (Center) (Cat. #[TA324498]) western blot analysis in Hela cell line and human placenta tissue lysates (35ug/lane). This demonstrates the MyoD1 antibody detected the MyoD1 protein (arrow).



IF image of HeLa cell stained with MyoD1 Antibody (Center) (Cat#[TA324498]). HeLa cells were incubated with MyoD1 primary antibody (1:25, 1 h at 37°C). For secondary antibody, Alexa Fluor® 488 conjugated donkey anti-rabbit antibody (green) was used (1:400). Cytoplasmic actin was counterstained with Alexa Fluor® 555 (red) conjugated Phalloidin (7 units/ml). Nuclei were counterstained with DAPI (blue). MyoD1 immunoreactivity is localized to nucleus significantly.