

Product datasheet for **TA324497S**

CYP2S1 Rabbit Polyclonal Antibody

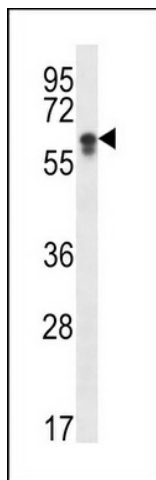
Product data:

Product Type:	Primary Antibodies
Applications:	IF, IHC, WB
Recommended Dilution:	WB: 1:1000, IHC: 1:10~50, IF: 1:10~50
Reactivity:	Human
Host:	Rabbit
Isotype:	IgG
Clonality:	Polyclonal
Immunogen:	This CYP2S1 antibody is generated from rabbits immunized with a KLH conjugated synthetic peptide between 399-428 amino acids from the C-terminal region of human CYP2S1.
Formulation:	Purified polyclonal antibody supplied in PBS with 0.09% (W/V) sodium azide.
Concentration:	lot specific
Purification:	This antibody is purified through a protein A column, followed by peptide affinity purification.
Conjugation:	Unconjugated
Storage:	Store at -20°C as received.
Stability:	Stable for 12 months from date of receipt.
Predicted Protein Size:	55817 Da
Gene Name:	cytochrome P450 family 2 subfamily S member 1
Database Link:	NP_085125 Entrez Gene 29785 Human Q96SQ9
Synonyms:	CYPIIS1
Protein Families:	Druggable Genome, P450, Transmembrane
Protein Pathways:	Metabolism of xenobiotics by cytochrome P450

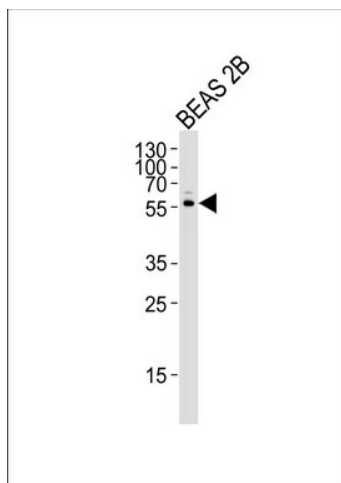


[View online »](#)

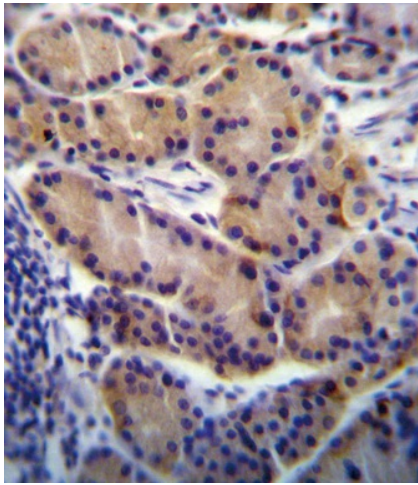
Product images:



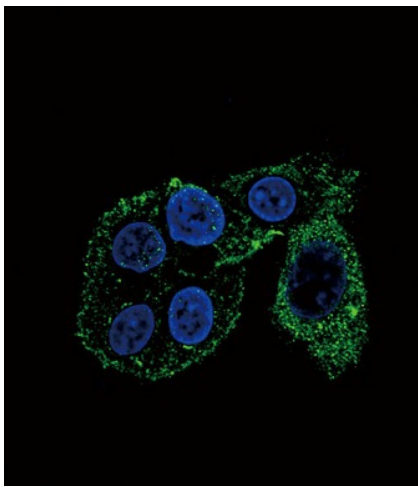
CYP2S1 Antibody (C-term) (Cat. #[TA324497]) western blot analysis in HepG2 cell line lysates (35ug/lane). This demonstrates the CYP2S1 antibody detected the CYP2S1 protein (arrow).



Western blot analysis of lysate from BEAS 2B cell line, using CYP2S1 Antibody (C-term) (Cat. # [TA324497]). [TA324497] was diluted at 1:1000. A goat anti-rabbit IgG H&L (HRP) at 1:5000 dilution was used as the secondary antibody. Lysate at 35ug.



CYP2S1 Antibody (C-term) (Cat. # [TA324497]) immunohistochemistry analysis in formalin fixed and paraffin embedded human stomach tissue followed by peroxidase conjugation of the secondary antibody and DAB staining. This data demonstrates the use of CYP2S1 Antibody (C-term) for immunohistochemistry. Clinical relevance has not been evaluated.



Confocal immunofluorescent analysis of CYP2S1 Antibody (C-term) (Cat#[TA324497]) with HepG2 cell followed by Alexa Fluor 488-conjugated goat anti-rabbit IgG (green). DAPI was used to stain the cell nuclear (blue).