

## Product datasheet for **TA324496S**

### HINFP Rabbit Polyclonal Antibody

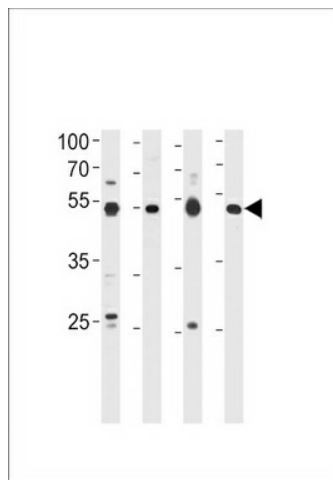
#### Product data:

Product Type:	Primary Antibodies
Applications:	WB
Recommended Dilution:	WB: 1:1000
Reactivity:	Human, Mouse
Host:	Rabbit
Isotype:	IgG
Clonality:	Polyclonal
Immunogen:	This HINFP antibody is generated from rabbits immunized with a KLH conjugated synthetic peptide between 317-346 amino acids from the Central region of human HINFP.
Formulation:	Purified polyclonal antibody supplied in PBS with 0.09% (W/V) sodium azide.
Concentration:	lot specific
Purification:	This antibody is purified through a protein A column, followed by peptide affinity purification.
Conjugation:	Unconjugated
Storage:	Store at -20°C as received.
Stability:	Stable for 12 months from date of receipt.
Predicted Protein Size:	59678 Da
Gene Name:	histone H4 transcription factor
Database Link:	<a href="#">NP_945322</a> <a href="#">Entrez Gene 102423 Mouse</a> <a href="#">Entrez Gene 25988 Human</a> <a href="#">Q9BQA5</a>
Synonyms:	HiNF-P; MIZF; ZNF743
Protein Families:	Transcription Factors



[View online »](#)

## Product images:



HINFP Antibody (Center) (Cat. #[TA324496])  
western blot analysis in 293 cell line, human  
placenta, mouse brain and spleen tissue lysates  
(35ug/lane). This demonstrates the HINFP  
antibody detected the HINFP protein (arrow).