

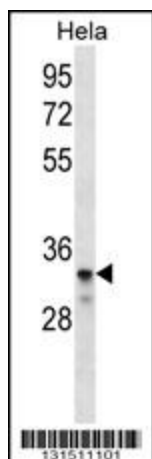
## Product datasheet for **TA324494**

### LDLRAD2 Rabbit Polyclonal Antibody

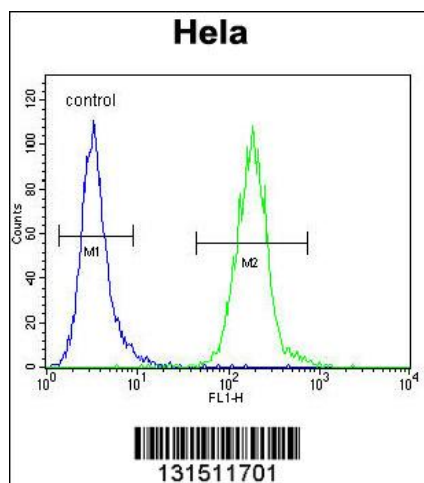
#### Product data:

Product Type:	Primary Antibodies
Applications:	FC, WB
Recommended Dilution:	WB: 1:1000, FC: 1:10~50
Reactivity:	Human
Host:	Rabbit
Isotype:	IgG
Clonality:	Polyclonal
Immunogen:	This LDLRAD2 antibody is generated from rabbits immunized with a KLH conjugated synthetic peptide between 132-160 amino acids from the Central region of human LDLRAD2.
Formulation:	Purified polyclonal antibody supplied in PBS with 0.09% (W/V) sodium azide.
Concentration:	lot specific
Purification:	This antibody is purified through a protein A column, followed by peptide affinity purification.
Conjugation:	Unconjugated
Storage:	Store at -20°C as received.
Stability:	Stable for 12 months from date of receipt.
Predicted Protein Size:	28581 Da
Gene Name:	low density lipoprotein receptor class A domain containing 2
Database Link:	<a href="#">NP_001013715</a> <a href="#">Entrez Gene 401944 Human</a> <a href="#">Q5SZ11</a>
Synonyms:	low density lipoprotein receptor A domain containing 2; low density lipoprotein receptor class A domain containing 2; OTTHUMP00000002767
Protein Families:	Druggable Genome

[View online »](#)

**Product images:**


LDLRAD2 Antibody (Center) (Cat. #TA324494) western blot analysis in HeLa cell line lysates (35ug/lane). This demonstrates the LDLRAD2 antibody detected the LDLRAD2 protein (arrow).



LDLRAD2 Antibody (Center) (Cat. #TA324494) flow cytometric analysis of HeLa cells (right histogram) compared to a negative control cell (left histogram). FITC-conjugated goat-anti-rabbit secondary antibodies were used for the analysis.