

Product datasheet for **TA324492**

p38 (MAPK14) Rabbit Polyclonal Antibody

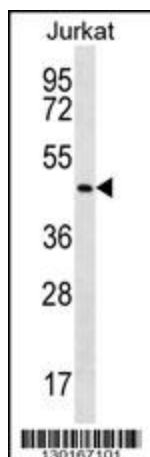
Product data:

Product Type:	Primary Antibodies
Applications:	IF, IHC, WB
Recommended Dilution:	IF: 1:10~50, WB: 1:1000, IHC: 1:10~50
Reactivity:	Human (Predicted: Mouse, Rat, Zebrafish)
Host:	Rabbit
Isotype:	IgG
Clonality:	Polyclonal
Immunogen:	This MAPK14 antibody is generated from rabbits immunized with a KLH conjugated synthetic peptide between 158-192 amino acids from the Central region of human MAPK14.
Formulation:	Purified polyclonal antibody supplied in PBS with 0.09% (W/V) sodium azide.
Concentration:	lot specific
Purification:	This antibody is purified through a protein A column, followed by peptide affinity purification.
Conjugation:	Unconjugated
Storage:	Store at -20°C as received.
Stability:	Stable for 12 months from date of receipt.
Predicted Protein Size:	41293 Da
Gene Name:	mitogen-activated protein kinase 14
Database Link:	NP_001306 Entrez Gene 26416 Mouse Entrez Gene 81649 Rat Entrez Gene 1432 Human Q16539
Synonyms:	CSBP; CSBP1; CSBP2; CSPB1; EXIP; Mxi2; p38; p38ALPHA; PRKM14; PRKM15; RK; SAPK2A
Protein Families:	Druggable Genome, Protein Kinase
Protein Pathways:	Amyotrophic lateral sclerosis (ALS), Epithelial cell signaling in Helicobacter pylori infection, Fc epsilon RI signaling pathway, GnRH signaling pathway, Leukocyte transendothelial migration, MAPK signaling pathway, Neurotrophin signaling pathway, NOD-like receptor signaling pathway, Progesterone-mediated oocyte maturation, RIG-I-like receptor signaling pathway, T cell receptor signaling pathway, Toll-like receptor signaling pathway, VEGF signaling pathway

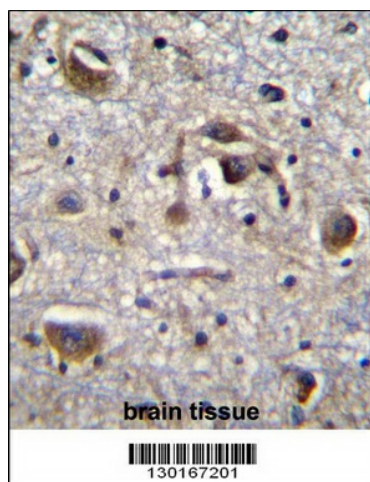


[View online »](#)

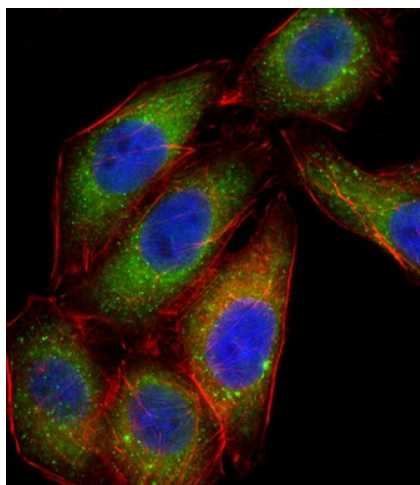
Product images:



MAPK14 Antibody (Center T180/Y182) (Cat. #TA324492) western blot analysis in Jurkat cell line lysates (35ug/lane). This demonstrates the MAPK14 antibody detected the MAPK14 protein (arrow).



MAPK14 Antibody (Center T180/Y182) (Cat. #TA324492) immunohistochemistry analysis in formalin fixed and paraffin embedded human brain tissue followed by peroxidase conjugation of the secondary antibody and DAB staining. This data demonstrates the use of MAPK14 Antibody (Center T180/Y182) for immunohistochemistry. Clinical relevance has not been evaluated.



IF image of A549 cell stained with MAPK14 Antibody (Center T180/Y182) (Cat#TA324492). A549 cells were incubated with MAPK14 primary antibody (1:25, 1 h at 37°C). For secondary antibody, Alexa Fluor® 488 conjugated donkey anti-rabbit antibody (green) was used (1:400). Cytoplasmic actin was counterstained with Alexa Fluor® 555 (red) conjugated Phalloidin (7 units/ml). Nuclei were counterstained with DAPI (blue). MAPK14 immunoreactivity is localized to Vesicles significantly and Cytoplasm weakly.