

## Product datasheet for **TA324491S**

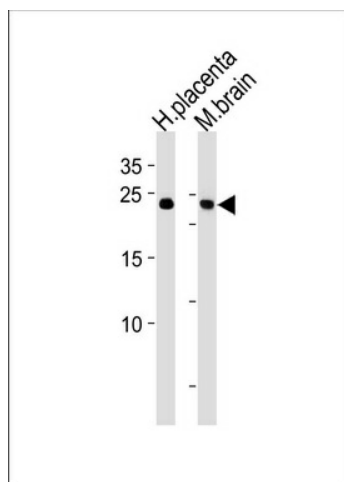
### SOX15 Rabbit Polyclonal Antibody

#### Product data:

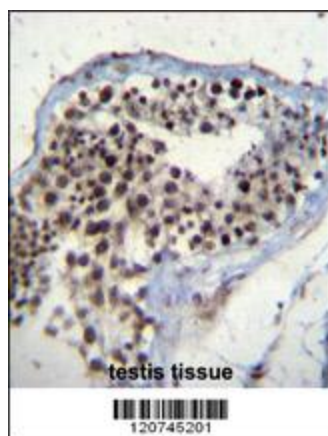
Product Type:	Primary Antibodies
Applications:	IHC, WB
Recommended Dilution:	WB: 1:1000, IHC: 1:10~50
Reactivity:	Human, Mouse
Host:	Rabbit
Isotype:	IgG
Clonality:	Polyclonal
Immunogen:	This SOX15 antibody is generated from rabbits immunized with a KLH conjugated synthetic peptide between 96-125 amino acids from the Central region of human SOX15.
Formulation:	Purified polyclonal antibody supplied in PBS with 0.09% (W/V) sodium azide.
Concentration:	lot specific
Purification:	This antibody is purified through a protein A column, followed by peptide affinity purification.
Conjugation:	Unconjugated
Storage:	Store at -20°C as received.
Stability:	Stable for 12 months from date of receipt.
Predicted Protein Size:	25251 Da
Gene Name:	SRY-box 15
Database Link:	<a href="#">NP_008873</a> <a href="#">Entrez Gene 20670 Mouse</a> <a href="#">Entrez Gene 6665 Human</a> <a href="#">O60248</a>
Synonyms:	SOX20; SOX26; SOX27
Protein Families:	Transcription Factors



[View online »](#)

**Product images:**


SOX15 Antibody (Center) (Cat. # [TA324491]) western blot analysis in human placenta and mouse brain tissue lysates (35ug/lane). This demonstrates the SOX15 antibody detected the SOX15 protein (arrow).



SOX15 Antibody (Center) (Cat. # [TA324491]) immunohistochemistry analysis in formalin fixed and paraffin embedded human testis tissue followed by peroxidase conjugation of the secondary antibody and DAB staining. This data demonstrates the use of SOX15 Antibody (Center) for immunohistochemistry. Clinical relevance has not been evaluated.