

Product datasheet for **TA324490S**

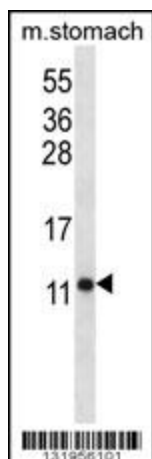
ATP5PF Rabbit Polyclonal Antibody

Product data:

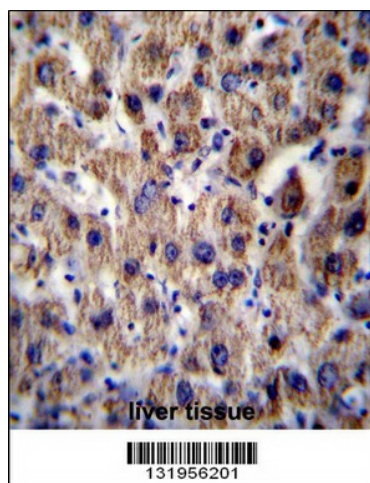
| | |
|-------------------------|---|
| Product Type: | Primary Antibodies |
| Applications: | IF, IHC, WB |
| Recommended Dilution: | IF: 1:10~50, WB: 1:1000, IHC: 1:10~50 |
| Reactivity: | Mouse (Predicted: Monkey) |
| Host: | Rabbit |
| Isotype: | IgG |
| Clonality: | Polyclonal |
| Immunogen: | This ATP5J antibody is generated from rabbits immunized with a KLH conjugated synthetic peptide between 28-56 amino acids from the Central region of human ATP5J. |
| Formulation: | Purified polyclonal antibody supplied in PBS with 0.09% (W/V) sodium azide. |
| Concentration: | lot specific |
| Purification: | This antibody is purified through a protein A column, followed by peptide affinity purification. |
| Conjugation: | Unconjugated |
| Storage: | Store at -20°C as received. |
| Stability: | Stable for 12 months from date of receipt. |
| Predicted Protein Size: | 12588 Da |
| Gene Name: | ATP synthase, H ⁺ transporting, mitochondrial Fo complex subunit F6 |
| Database Link: | NP_001003696 Entrez Gene 11957 Mouse P18859 |
| Synonyms: | ATP5; ATP5A; ATPM; CF6; F6 |
| Protein Pathways: | Alzheimer's disease, Huntington's disease, Metabolic pathways, Oxidative phosphorylation, Parkinson's disease |



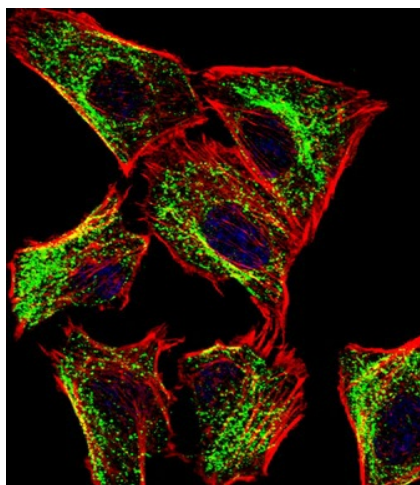
[View online »](#)

Product images:

ATP5J Antibody (Center) (Cat. # [TA324490]) western blot analysis in mouse stomach tissue lysates (35ug/lane). This demonstrates the ATP5J antibody detected the ATP5J protein (arrow).



ATP5J Antibody (Center) (Cat. # [TA324490]) immunohistochemistry analysis in formalin fixed and paraffin embedded human liver tissue followed by peroxidase conjugation of the secondary antibody and DAB staining. This data demonstrates the use of ATP5J Antibody (Center) for immunohistochemistry. Clinical relevance has not been evaluated.



IF image of U251 cell stained with ATP5J Antibody (Center) (Cat#[TA324490]). U251 cells were incubated with ATP5J primary antibody (1:25, 1 h at 37°C). For secondary antibody, Alexa Fluor® 488 conjugated donkey anti-rabbit antibody (green) was used (1:400). Cytoplasmic actin was counterstained with Alexa Fluor® 555 (red) conjugated Phalloidin (7 units/ml). Nuclei were counterstained with DAPI (blue). ATP5J immunoreactivity is localized to Mitochondria significantly.