

Product datasheet for **TA324489S**

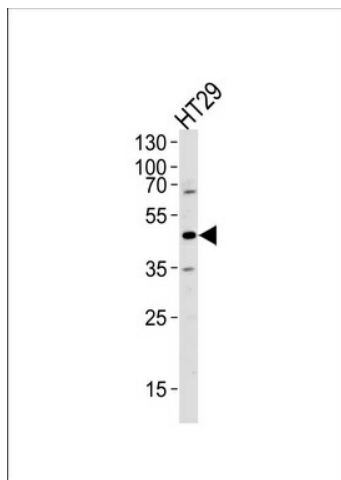
Ribonuclease Inhibitor (RNH1) Rabbit Polyclonal Antibody

Product data:

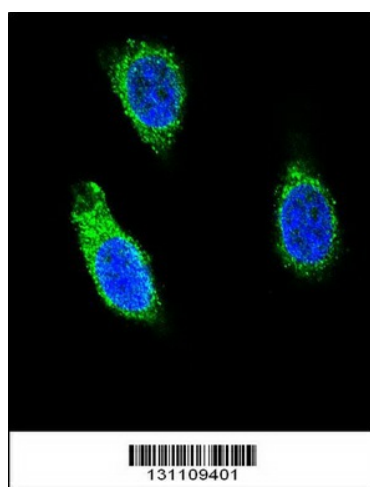
Product Type:	Primary Antibodies
Applications:	IF, WB
Recommended Dilution:	WB: 1:1000, IF: 1:10~50
Reactivity:	Human
Host:	Rabbit
Isotype:	IgG
Clonality:	Polyclonal
Immunogen:	This RNH1 antibody is generated from rabbits immunized with a KLH conjugated synthetic peptide between 425-454 amino acids from the C-terminal region of human RNH1.
Formulation:	Purified polyclonal antibody supplied in PBS with 0.09% (W/V) sodium azide.
Concentration:	lot specific
Purification:	This antibody is purified through a protein A column, followed by peptide affinity purification.
Conjugation:	Unconjugated
Storage:	Store at -20°C as received.
Stability:	Stable for 12 months from date of receipt.
Predicted Protein Size:	49973 Da
Gene Name:	ribonuclease/angiogenin inhibitor 1
Database Link:	NP_002930 Entrez Gene 6050 Human P13489
Synonyms:	RAI; RNH



[View online »](#)

Product images:


Western blot analysis of lysate from HT29 cell line, using RNH1 Antibody (C-term) (Cat. # [TA324489]).[TA324489] was diluted at 1:1000 at each lane. A goat anti-rabbit IgG H&L (HRP) at 1:5000 dilution was used as the secondary antibody. Lysate at 35ug per lane.



Confocal immunofluorescent analysis of RNH1 Antibody (C-term) (Cat#[TA324489]) with 293 cell followed by Alexa Fluor 488-conjugated goat anti-rabbit IgG (green). DAPI was used to stain the cell nuclear (blue).