

## Product datasheet for **TA324488**

### Translin (TSN) Rabbit Polyclonal Antibody

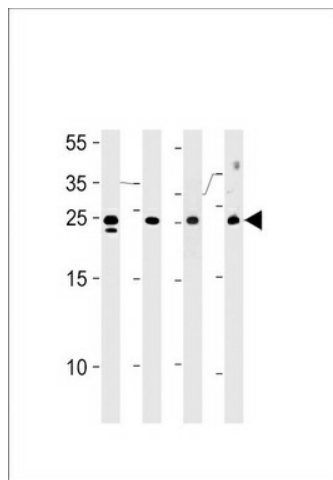
#### Product data:

Product Type:	Primary Antibodies
Applications:	IF, IHC, WB
Recommended Dilution:	WB: 1:1000, IF: 1:10~50, IHC: 1:10~50
Reactivity:	Human, Mouse (Predicted: Bovine, Hamster)
Host:	Rabbit
Isotype:	IgG
Clonality:	Polyclonal
Immunogen:	This TSN antibody is generated from rabbits immunized with a KLH conjugated synthetic peptide between 109-138 amino acids from the Central region of human TSN.
Formulation:	Purified polyclonal antibody supplied in PBS with 0.09% (W/V) sodium azide.
Concentration:	lot specific
Purification:	This antibody is purified through a protein A column, followed by peptide affinity purification.
Conjugation:	Unconjugated
Storage:	Store at -20°C as received.
Stability:	Stable for 12 months from date of receipt.
Predicted Protein Size:	26183 Da
Gene Name:	translin
Database Link:	<a href="#">NP_004613</a> <a href="#">Entrez Gene 22099 Mouse</a> <a href="#">Entrez Gene 7247 Human</a> <a href="#">Q15631</a>
Synonyms:	BCLF-1; C3PO; RCHF1; REHF-1; TBRBP; TRSLN

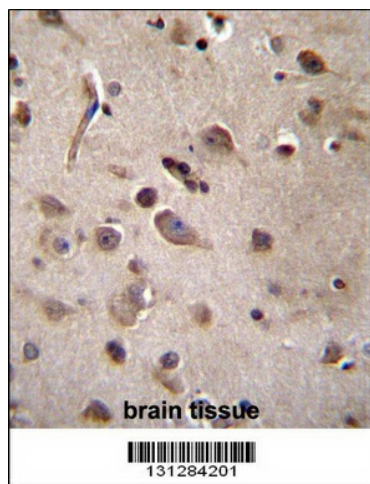


[View online »](#)

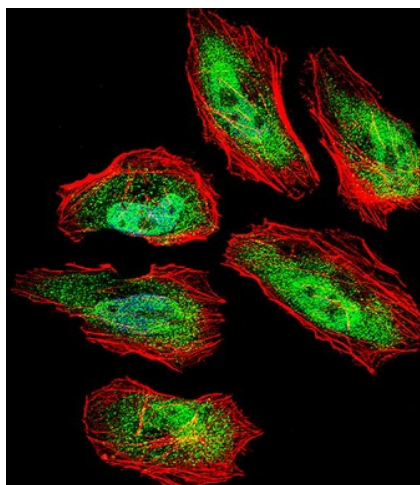
## Product images:



TSN Antibody (Center) (Cat. #TA324488) western blot analysis in HL-60, Jurkat, K562 cell line mouse spleen tissue lysates (35ug/lane). This demonstrates the TSN antibody detected the TSN protein (arrow).



TSN Antibody (Center) (Cat. #TA324488) immunohistochemistry analysis in formalin fixed and paraffin embedded human brain tissue followed by peroxidase conjugation of the secondary antibody and DAB staining. This data demonstrates the use of TSN Antibody (Center) for immunohistochemistry. Clinical relevance has not been evaluated.



IF image of HeLa cell stained with TSN Antibody (Center) (Cat#TA324488). HeLa cells were incubated with TSN primary antibody (1:25, 1 h at 37°C). For secondary antibody, Alexa Fluor® 488 conjugated donkey anti-rabbit antibody (green) was used (1:400). Cytoplasmic actin was counterstained with Alexa Fluor® 555 (red) conjugated Phalloidin (7 units/ml). Nuclei were counterstained with DAPI (blue). TSN immunoreactivity is localized to Nucleus and Cytoplasm significantly.