

## Product datasheet for **TA324487**

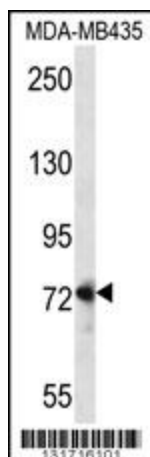
### DVL1 Rabbit Polyclonal Antibody

#### Product data:

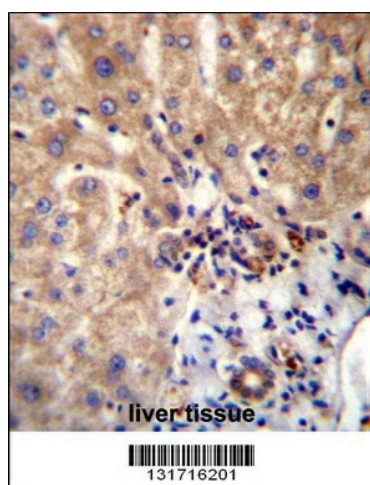
Product Type:	Primary Antibodies
Applications:	IF, IHC, WB
Recommended Dilution:	WB: 1:1000, IHC: 1:10~50, IF: 1:10~50
Reactivity:	Human (Predicted: Mouse, Rat)
Host:	Rabbit
Isotype:	IgG
Clonality:	Polyclonal
Immunogen:	This DVL1 antibody is generated from rabbits immunized with a KLH conjugated synthetic peptide between 442-470 amino acids from the Central region of human DVL1.
Formulation:	Purified polyclonal antibody supplied in PBS with 0.09% (W/V) sodium azide.
Concentration:	lot specific
Purification:	This antibody is purified through a protein A column, followed by peptide affinity purification.
Conjugation:	Unconjugated
Storage:	Store at -20°C as received.
Stability:	Stable for 12 months from date of receipt.
Predicted Protein Size:	75187 Da
Gene Name:	dishevelled segment polarity protein 1
Database Link:	<a href="#">NP_004412</a> <a href="#">Entrez Gene 13542 Mouse</a> <a href="#">Entrez Gene 83721 Rat</a> <a href="#">Entrez Gene 1855 Human</a> <a href="#">Q14640</a>
Synonyms:	DRS2; DVL; DVL1L1; DVL1P1
Protein Families:	Druggable Genome, ES Cell Differentiation/IPS
Protein Pathways:	Basal cell carcinoma, Colorectal cancer, Melanogenesis, Notch signaling pathway, Pathways in cancer, Wnt signaling pathway



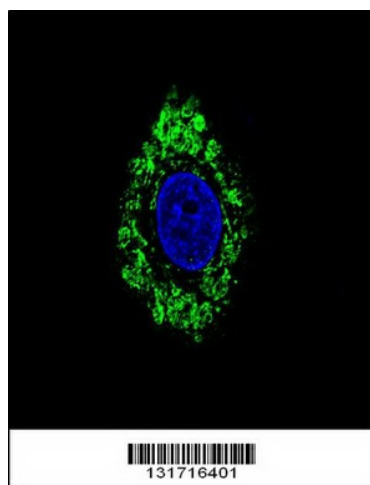
[View online »](#)

**Product images:**

DVL1 Antibody (Center) (Cat. #TA324487) western blot analysis in MDA-MB435 cell line lysates (35ug/lane). This demonstrates the DVL1 antibody detected the DVL1 protein (arrow).



DVL1 Antibody (Center) (Cat. #TA324487) immunohistochemistry analysis in formalin fixed and paraffin embedded human liver tissue followed by peroxidase conjugation of the secondary antibody and DAB staining. This data demonstrates the use of DVL1 Antibody (Center) for immunohistochemistry. Clinical relevance has not been evaluated.



Confocal immunofluorescent analysis of DVL1 Antibody (Center) (Cat#TA324487) with HepG2 cell followed by Alexa Fluor 488-conjugated goat anti-rabbit IgG (green). DAPI was used to stain the cell nuclear (blue).