

## Product datasheet for **TA324486S**

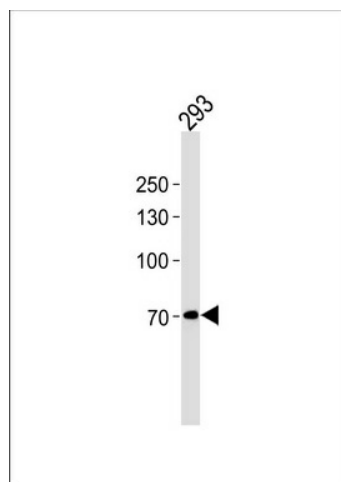
### POU6F2 Rabbit Polyclonal Antibody

#### Product data:

Product Type:	Primary Antibodies
Applications:	WB
Recommended Dilution:	WB: 1:1000
Reactivity:	Human
Host:	Rabbit
Isotype:	IgG
Clonality:	Polyclonal
Immunogen:	This POU6F2 antibody is generated from rabbits immunized with a KLH conjugated synthetic peptide between 34-61 amino acids from the N-terminal region of human POU6F2.
Formulation:	Purified polyclonal antibody supplied in PBS with 0.09% (W/V) sodium azide.
Concentration:	lot specific
Purification:	This antibody is purified through a protein A column, followed by peptide affinity purification.
Conjugation:	Unconjugated
Storage:	Store at -20°C as received.
Stability:	Stable for 12 months from date of receipt.
Predicted Protein Size:	73265 Da
Gene Name:	POU class 6 homeobox 2
Database Link:	<a href="#">NP_001159490</a> <a href="#">Entrez Gene 11281 Human</a> <a href="#">P78424</a>
Synonyms:	RPF-1; WT5; WTSL
Protein Families:	Transcription Factors



[View online »](#)

**Product images:**

POU6F2 Antibody (N-term) (Cat. #TA324486])  
western blot analysis in 293 cell line lysates  
(35ug/lane). This demonstrates the POU6F2  
antibody detected the POU6F2 protein (arrow).