

## Product datasheet for **TA324485**

### ATF 4 (ATF4) Rabbit Polyclonal Antibody

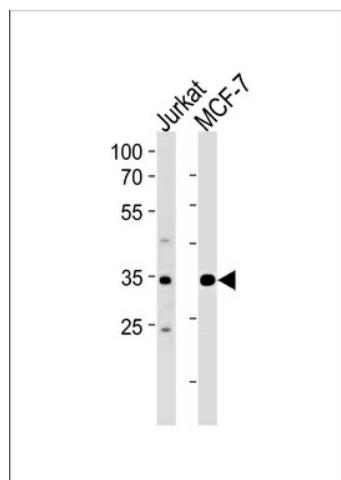
#### Product data:

Product Type:	Primary Antibodies
Applications:	WB
Recommended Dilution:	WB: 1:1000
Reactivity:	Human
Host:	Rabbit
Isotype:	IgG
Clonality:	Polyclonal
Immunogen:	This ATF4 antibody is generated from rabbits immunized with a KLH conjugated synthetic peptide between 171-198 amino acids from the Central region of human ATF4.
Formulation:	Purified polyclonal antibody supplied in PBS with 0.09% (W/V) sodium azide.
Concentration:	lot specific
Purification:	This antibody is purified through a protein A column, followed by peptide affinity purification.
Conjugation:	Unconjugated
Storage:	Store at -20°C as received.
Stability:	Stable for 12 months from date of receipt.
Predicted Protein Size:	38590 Da
Gene Name:	activating transcription factor 4
Database Link:	<a href="#">NP_001666</a> <a href="#">Entrez Gene 468 Human</a> <a href="#">P18848</a>
Synonyms:	CREB-2; CREB2; TAXREB67; TXREB
Protein Families:	Transcription Factors
Protein Pathways:	GnRH signaling pathway, Long-term potentiation, MAPK signaling pathway, Neurotrophin signaling pathway, Prostate cancer



[View online »](#)

## Product images:



ATF4 Antibody (Center) (Cat. #TA324485) western blot analysis in Jurkat, MCF-7 cell line lysates (35ug/lane). This demonstrates the ATF4 antibody detected the ATF4 protein (arrow).