

Product datasheet for **TA324484S**

KDM1A Rabbit Polyclonal Antibody

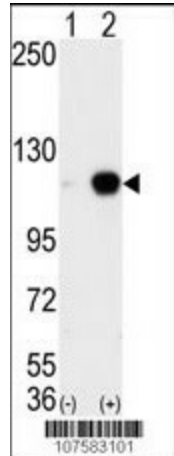
Product data:

Product Type:	Primary Antibodies
Applications:	IF, IHC, WB
Recommended Dilution:	WB: 1:1000, IHC: 1:50~100, IF: 1:10~50
Reactivity:	Human (Predicted: Mouse)
Host:	Rabbit
Isotype:	IgG
Clonality:	Polyclonal
Immunogen:	This LSD1 antibody is generated from rabbits immunized with a KLH conjugated synthetic peptide between 819-852 amino acids from the C-terminal region of human LSD1.
Formulation:	Purified polyclonal antibody supplied in PBS with 0.09% (W/V) sodium azide.
Concentration:	lot specific
Purification:	This antibody is prepared by Saturated Ammonium Sulfate (SAS) precipitation followed by dialysis against PBS.
Conjugation:	Unconjugated
Storage:	Store at -20°C as received.
Stability:	Stable for 12 months from date of receipt.
Predicted Protein Size:	92903 Da
Gene Name:	lysine demethylase 1A
Database Link:	NP_001009999 Entrez Gene 99982 Mouse Entrez Gene 23028 Human O60341
Synonyms:	AOF2; BHC110; CPRF; KDM1; LSD1
Protein Families:	Druggable Genome, Transcription Factors

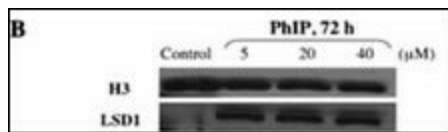


[View online »](#)

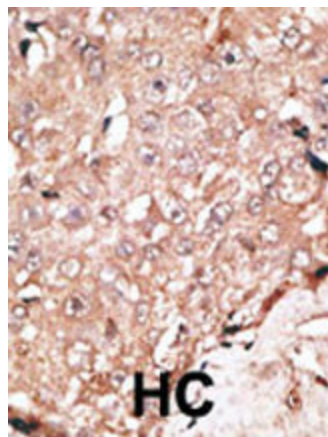
Product images:



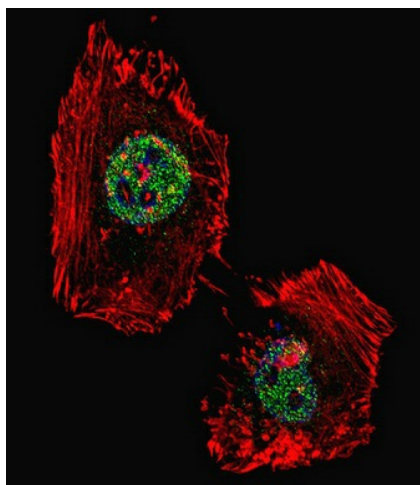
Western blot analysis of AOF2 (arrow) using LSD1 Antibody (C-term) (Cat.#[TA324484]). 293 cell lysates (2 ug/lane) either nontransfected (Lane 1) or transiently transfected with the AOF2 gene (Lane 2) (Origene Technologies).



Western immunoblot. Nuclear extracts of control and PhIP-treated HMEC. Proteins were transferred onto polyvinylidene difluoride and blotted with anti-LSD1 antibody. Nuclear LSD1 protein levels increased in carcinogen-treated HMEC compared with control HMEC.



Formalin-fixed and paraffin-embedded human cancer tissue reacted with the primary antibody, which was peroxidase-conjugated to the secondary antibody, followed by DAB staining. This data demonstrates the use of this antibody for immunohistochemistry; clinical relevance has not been evaluated. BC = breast carcinoma; HC = hepatocarcinoma.



IF image of HeLa cell stained with hLSD1-Y712 (Cat#[TA324484]). HeLa cells were incubated with hLSD1 primary antibody (1:25, 1 h at 37°C). For secondary antibody, Alexa Fluor® 488 conjugated donkey anti-rabbit antibody (green) was used (1:400). Cytoplasmic actin was counterstained with Alexa Fluor® 555 (red) conjugated Phalloidin (7 units/ml). Nuclei were counterstained with DAPI (blue). hLSD1 immunoreactivity is localized to nucleus significantly.