

## Product datasheet for **TA324482S**

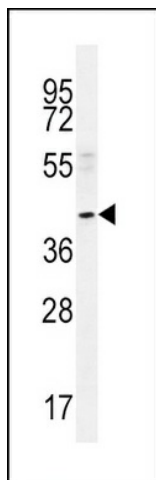
### NEU2 Rabbit Polyclonal Antibody

#### Product data:

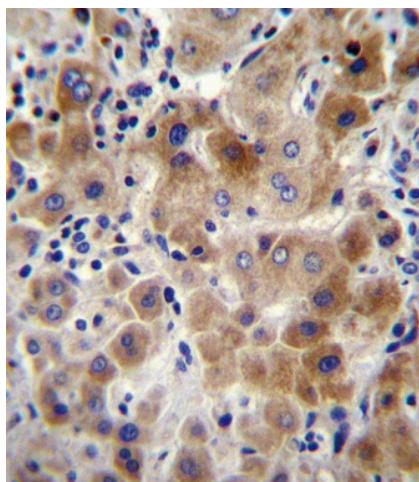
Product Type:	Primary Antibodies
Applications:	FC, IF, IHC, WB
Recommended Dilution:	WB: 1:1000, IHC: 1:10~50, IF: 1:10~50, FC: 1:10~50
Reactivity:	Human
Host:	Rabbit
Isotype:	IgG
Clonality:	Polyclonal
Immunogen:	This NEU2 antibody is generated from rabbits immunized with a KLH conjugated synthetic peptide between 23-50 amino acids from the N-terminal region of human NEU2.
Formulation:	Purified polyclonal antibody supplied in PBS with 0.09% (W/V) sodium azide.
Concentration:	lot specific
Purification:	This antibody is purified through a protein A column, followed by peptide affinity purification.
Conjugation:	Unconjugated
Storage:	Store at -20°C as received.
Stability:	Stable for 12 months from date of receipt.
Predicted Protein Size:	42254 Da
Gene Name:	neuraminidase 2 (cytosolic sialidase)
Database Link:	<a href="#">NP_005374</a> <a href="#">Entrez Gene 4759 Human</a> <a href="#">Q9Y3R4</a>
Synonyms:	SIAL2
Protein Pathways:	Other glycan degradation, Sphingolipid metabolism

[View online »](#)

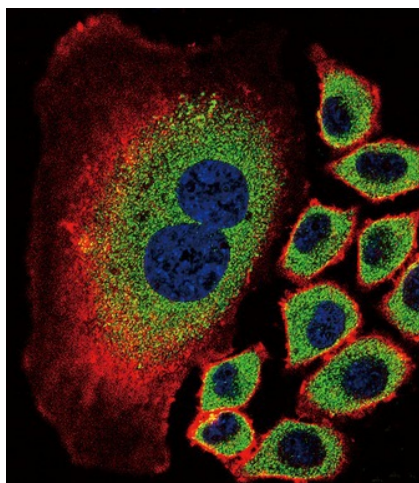
## Product images:



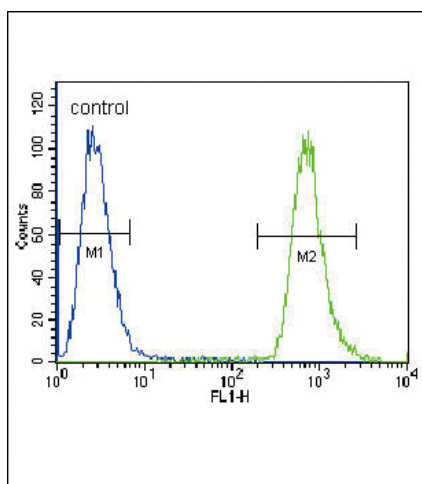
NEU2 Antibody (N-term) (Cat. # [TA324482]) western blot analysis in A549 cell line lysates (35ug/lane). This demonstrates the NEU2 antibody detected the NEU2 protein (arrow).



NEU2 Antibody (N-term) (Cat. # [TA324482]) immunohistochemistry analysis in formalin fixed and paraffin embedded human liver tissue followed by peroxidase conjugation of the secondary antibody and DAB staining. This data demonstrates the use of NEU2 Antibody (N-term) for immunohistochemistry. Clinical relevance has not been evaluated.



Confocal immunofluorescent analysis of NEU2 Antibody (N-term) (Cat#[TA324482]) with A549 cell followed by Alexa Fluor 488-conjugated goat anti-rabbit IgG (green). Actin filaments have been labeled with Alexa Fluor 555 phalloidin (red). DAPI was used to stain the cell nuclear (blue).



NEU2 Antibody (N-term) (Cat. #TA324482]) flow cytometric analysis of A549 cells (right histogram) compared to a negative control cell (left histogram). FITC-conjugated goat-anti-rabbit secondary antibodies were used for the analysis.