

Product datasheet for **TA324481**

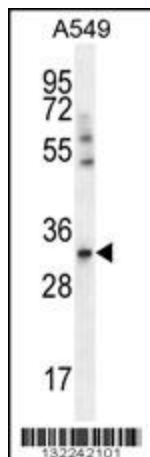
SLC25A6 Rabbit Polyclonal Antibody

Product data:

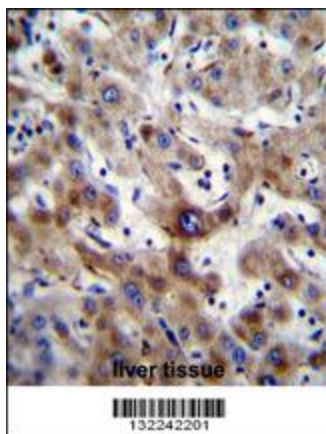
Product Type:	Primary Antibodies
Applications:	FC, IF, IHC, WB
Recommended Dilution:	WB: 1:1000, IHC: 1:10~50, IF: 1:10~50, FC: 1:10~50
Reactivity:	Human
Host:	Rabbit
Isotype:	IgG
Clonality:	Polyclonal
Immunogen:	This SLC25A6 antibody is generated from rabbits immunized with a KLH conjugated synthetic peptide between 128-155 amino acids from the Central region of human SLC25A6.
Formulation:	Purified polyclonal antibody supplied in PBS with 0.09% (W/V) sodium azide.
Concentration:	lot specific
Purification:	This antibody is purified through a protein A column, followed by peptide affinity purification.
Conjugation:	Unconjugated
Storage:	Store at -20°C as received.
Stability:	Stable for 12 months from date of receipt.
Predicted Protein Size:	32866 Da
Gene Name:	solute carrier family 25 member 6
Database Link:	NP_001627 Entrez Gene 293 Human P12236
Synonyms:	2; 3; AAC3; ANT; ANT 2; ANT 3; ANT3; ANT3Y
Protein Families:	Druggable Genome, Transmembrane
Protein Pathways:	Calcium signaling pathway, Huntington's disease, Parkinson's disease



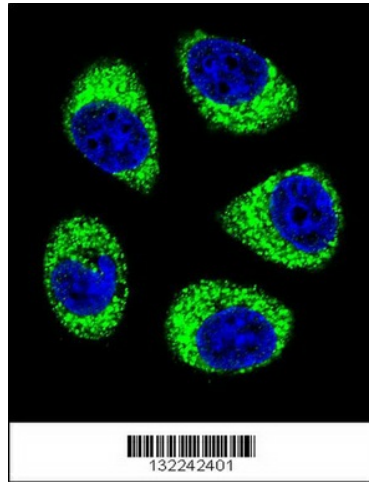
[View online »](#)

Product images:

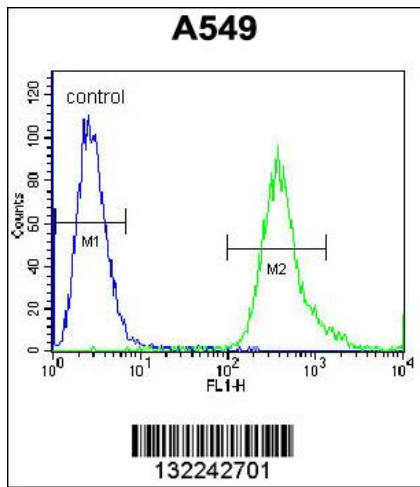
SLC25A6 Antibody (Center) (Cat. #TA324481) western blot analysis in A549 cell line lysates (35ug/lane). This demonstrates the SLC25A6 antibody detected the SLC25A6 protein (arrow).



SLC25A6 Antibody (Center) (Cat. #TA324481) immunohistochemistry analysis in formalin fixed and paraffin embedded human liver tissue followed by peroxidase conjugation of the secondary antibody and DAB staining. This data demonstrates the use of SLC25A6 Antibody (Center) for immunohistochemistry. Clinical relevance has not been evaluated.



Confocal immunofluorescent analysis of SLC25A6 Antibody (Center) (Cat#TA324481) with A549 cell followed by Alexa Fluor 488-conjugated goat anti-rabbit IgG (green). DAPI was used to stain the cell nuclear (blue).



SLC25A6 Antibody (Center) (Cat. #TA324481) flow cytometric analysis of A549 cells (right histogram) compared to a negative control cell (left histogram). FITC-conjugated goat-anti-rabbit secondary antibodies were used for the analysis.