

Product datasheet for **TA324480**

PYGO1 Rabbit Polyclonal Antibody

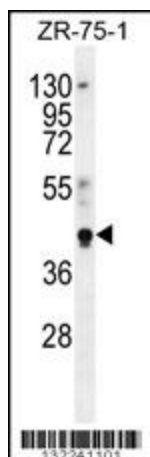
Product data:

Product Type:	Primary Antibodies
Applications:	IF, IHC, WB
Recommended Dilution:	WB: 1:1000, IHC: 1:10~50, IF: 1:10~50
Reactivity:	Human
Host:	Rabbit
Isotype:	IgG
Clonality:	Polyclonal
Immunogen:	This PYGO1 antibody is generated from rabbits immunized with a KLH conjugated synthetic peptide between 382-409 amino acids from the C-terminal region of human PYGO1.
Formulation:	Purified polyclonal antibody supplied in PBS with 0.09% (W/V) sodium azide.
Concentration:	lot specific
Purification:	This antibody is purified through a protein A column, followed by peptide affinity purification.
Conjugation:	Unconjugated
Storage:	Store at -20°C as received.
Stability:	Stable for 12 months from date of receipt.
Predicted Protein Size:	45116 Da
Gene Name:	pygopus family PHD finger 1
Database Link:	NP_056432 Entrez Gene 26108 Human Q9Y3Y4
Synonyms:	DKFZp547G0910
Protein Families:	Druggable Genome



[View online »](#)

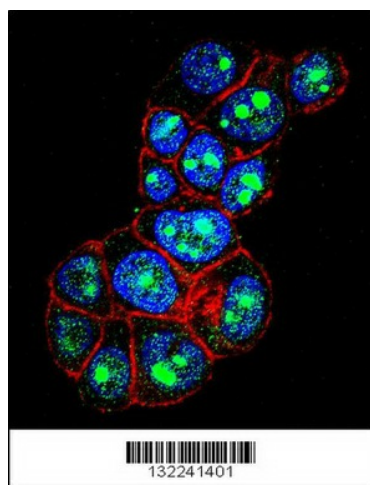
Product images:



PYGO1 Antibody (C-term) (Cat. #TA324480) western blot analysis in ZR-75-1 cell line lysates (35ug/lane). This demonstrates the PYGO1 antibody detected the PYGO1 protein (arrow).



PYGO1 Antibody (C-term) (Cat. #TA324480) immunohistochemistry analysis in formalin fixed and paraffin embedded human placenta tissue followed by peroxidase conjugation of the secondary antibody and DAB staining. This data demonstrates the use of PYGO1 Antibody (C-term) for immunohistochemistry. Clinical relevance has not been evaluated.



Confocal immunofluorescent analysis of PYGO1 Antibody (C-term) (Cat#TA324480) with ZR-75-1 cell followed by Alexa Fluor 488-conjugated goat anti-rabbit IgG (green). Actin filaments have been labeled with Alexa Fluor 555 phalloidin (red). DAPI was used to stain the cell nuclear (blue).