

## Product datasheet for **TA324479S**

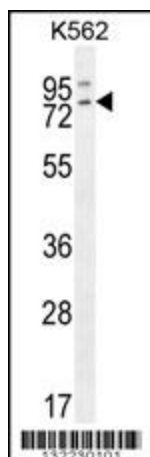
### **RASGRP2 Rabbit Polyclonal Antibody**

#### **Product data:**

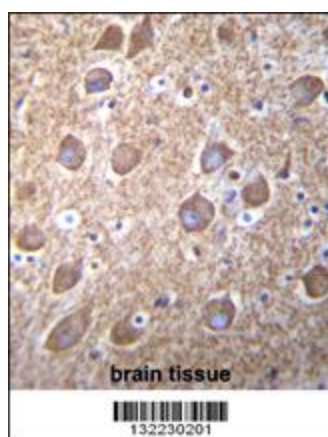
Product Type:	Primary Antibodies
Applications:	IF, IHC, WB
Recommended Dilution:	WB: 1:1000, IHC: 1:10~50, IF: 1:10~50
Reactivity:	Human (Predicted: Mouse, Rat, Bovine)
Host:	Rabbit
Isotype:	IgG
Clonality:	Polyclonal
Immunogen:	This RASGRP2 antibody is generated from rabbits immunized with a KLH conjugated synthetic peptide between 7-34 amino acids from the N-terminal region of human RASGRP2.
Formulation:	Purified polyclonal antibody supplied in PBS with 0.09% (W/V) sodium azide.
Concentration:	lot specific
Purification:	This antibody is purified through a protein A column, followed by peptide affinity purification.
Conjugation:	Unconjugated
Storage:	Store at -20°C as received.
Stability:	Stable for 12 months from date of receipt.
Predicted Protein Size:	69248 Da
Gene Name:	RAS guanyl releasing protein 2
Database Link:	<a href="#">NP_001092140</a> <a href="#">Entrez Gene 19395 Mouse</a> <a href="#">Entrez Gene 361714 Rat</a> <a href="#">Entrez Gene 10235 Human</a> <a href="#">Q7LDG7</a>
Synonyms:	CALDAG-GEFI; CDC25L
Protein Pathways:	Chemokine signaling pathway, MAPK signaling pathway



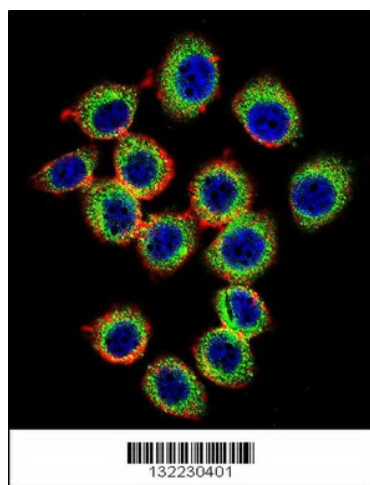
[View online »](#)

**Product images:**


RASGRP2 Antibody (N-term) (Cat. # [TA324479]) western blot analysis in K562 cell line lysates (35ug/lane). This demonstrates the RASGRP2 antibody detected the RASGRP2 protein (arrow).



RASGRP2 Antibody (N-term) (Cat. # [TA324479]) immunohistochemistry analysis in formalin fixed and paraffin embedded human brain tissue followed by peroxidase conjugation of the secondary antibody and DAB staining. This data demonstrates the use of RASGRP2 Antibody (N-term) for immunohistochemistry. Clinical relevance has not been evaluated.



Confocal immunofluorescent analysis of RASGRP2 Antibody (N-term) (Cat#[TA324479]) with U-251MG cell followed by Alexa Fluor 488-conjugated goat anti-rabbit IgG (green). Actin filaments have been labeled with Alexa Fluor555 phalloidin (red). DAPI was used to stain the cell nuclear (blue).